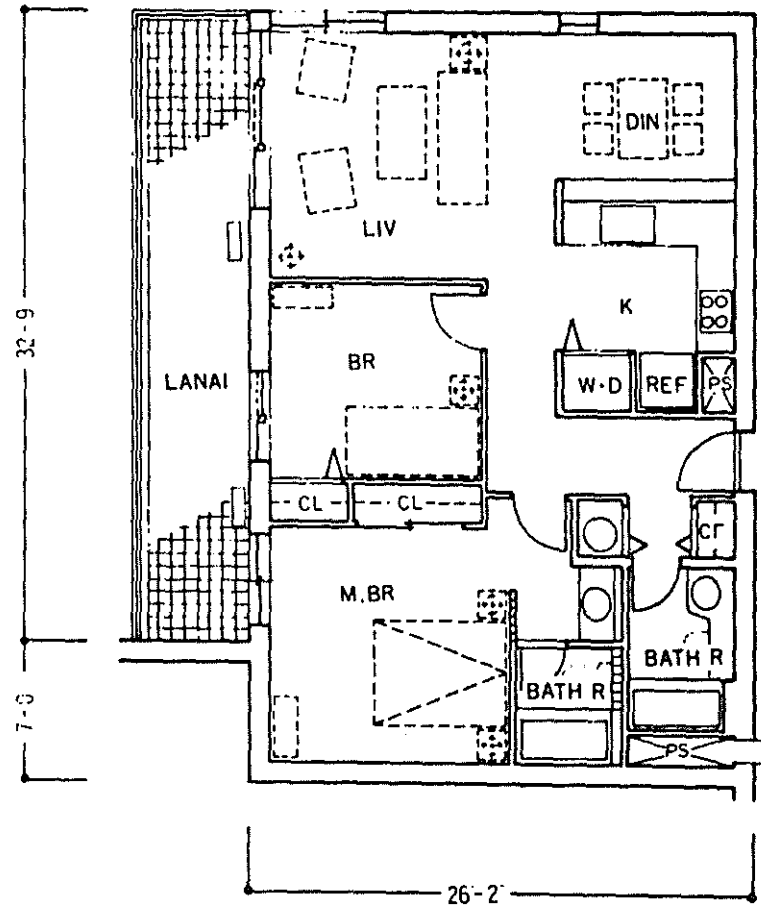


ATSUHO OKA TOWERS UNIT PLAN

B'1 Type

	Es
B1~3F	910.00 SF
4~8 F	920.35 SF
9 F	938.01 SF

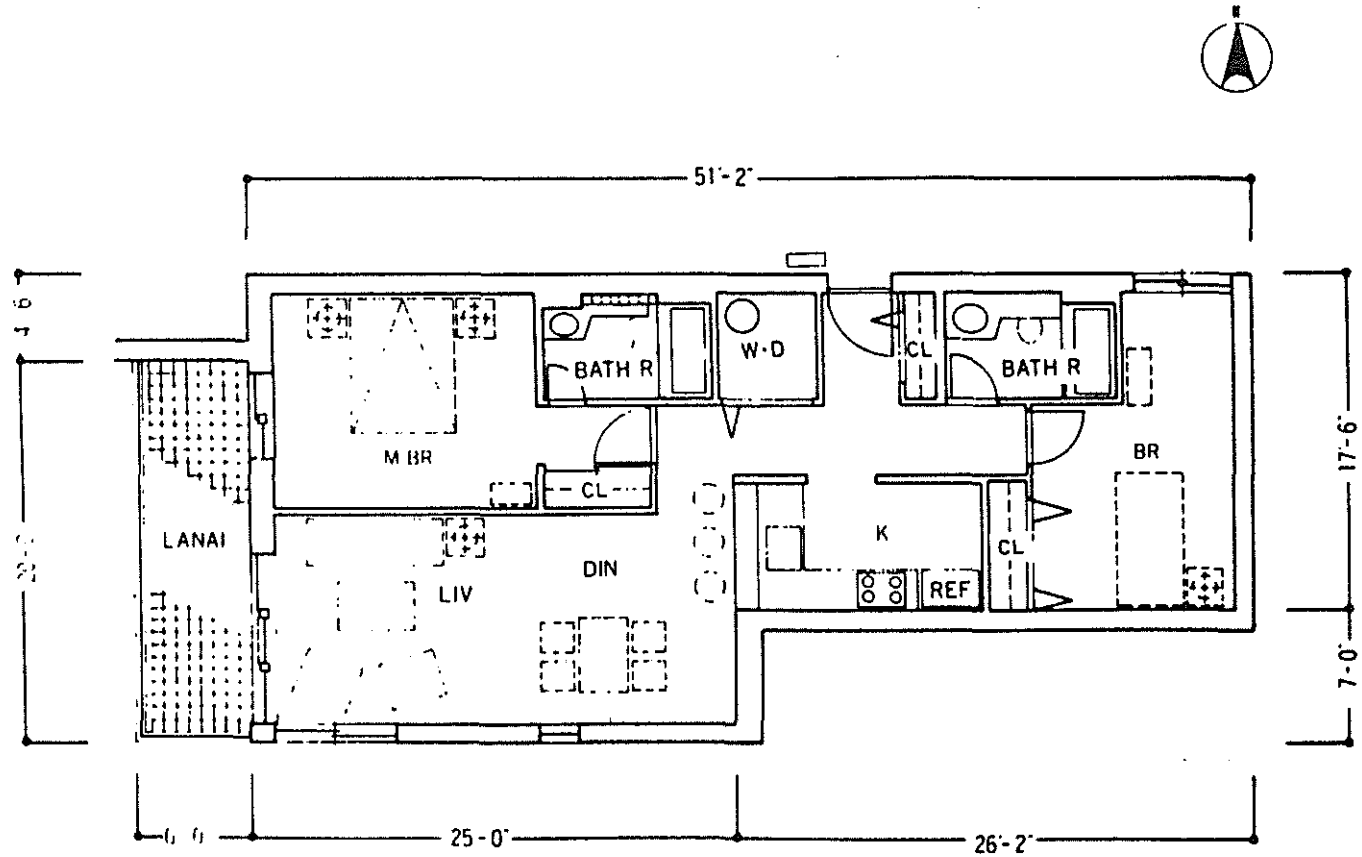


1. The furniture indicated by dash lines are included in the furnished rooms.
2. Even if the furniture has a dash under it, the furniture is not included in the unfurnished rooms.

ATSUHO OKA TOWERS UNIT PLAN

B2 Type

	Ea
B1~3F	957.06 SF
4~8F	968.32 SF
9F	989.11 SF

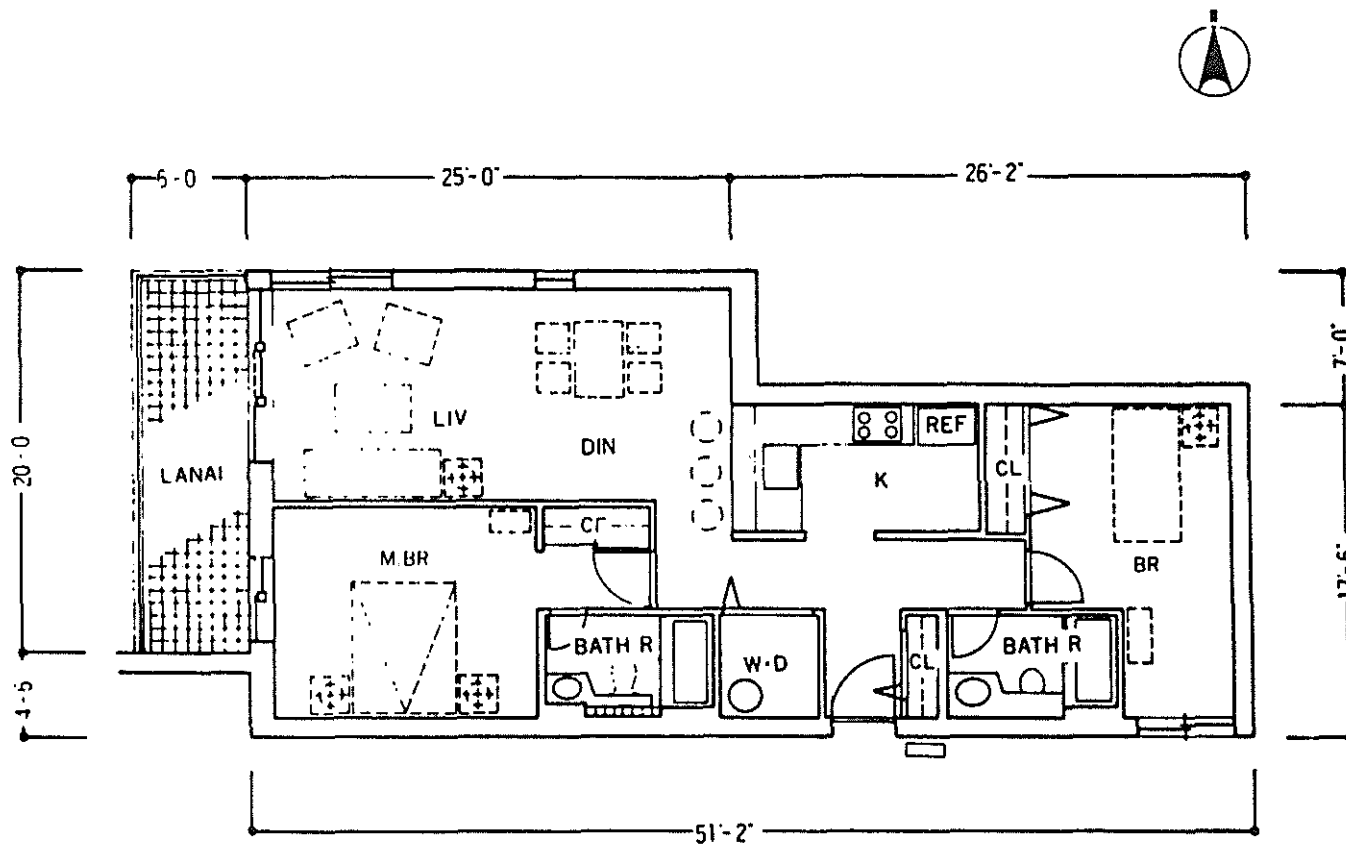


1. The furniture indicated by dash lines are included in the furnished rooms.
 2. Even if the furniture has a dash under it, the furniture is not included in the unfurnished room.

LATSUHO OKA TOWERS UNIT PLAN

B'2 Type

	Ea
B1~3F	957.06 SF
4~8F	968.32 SF
9F	989.11 SF

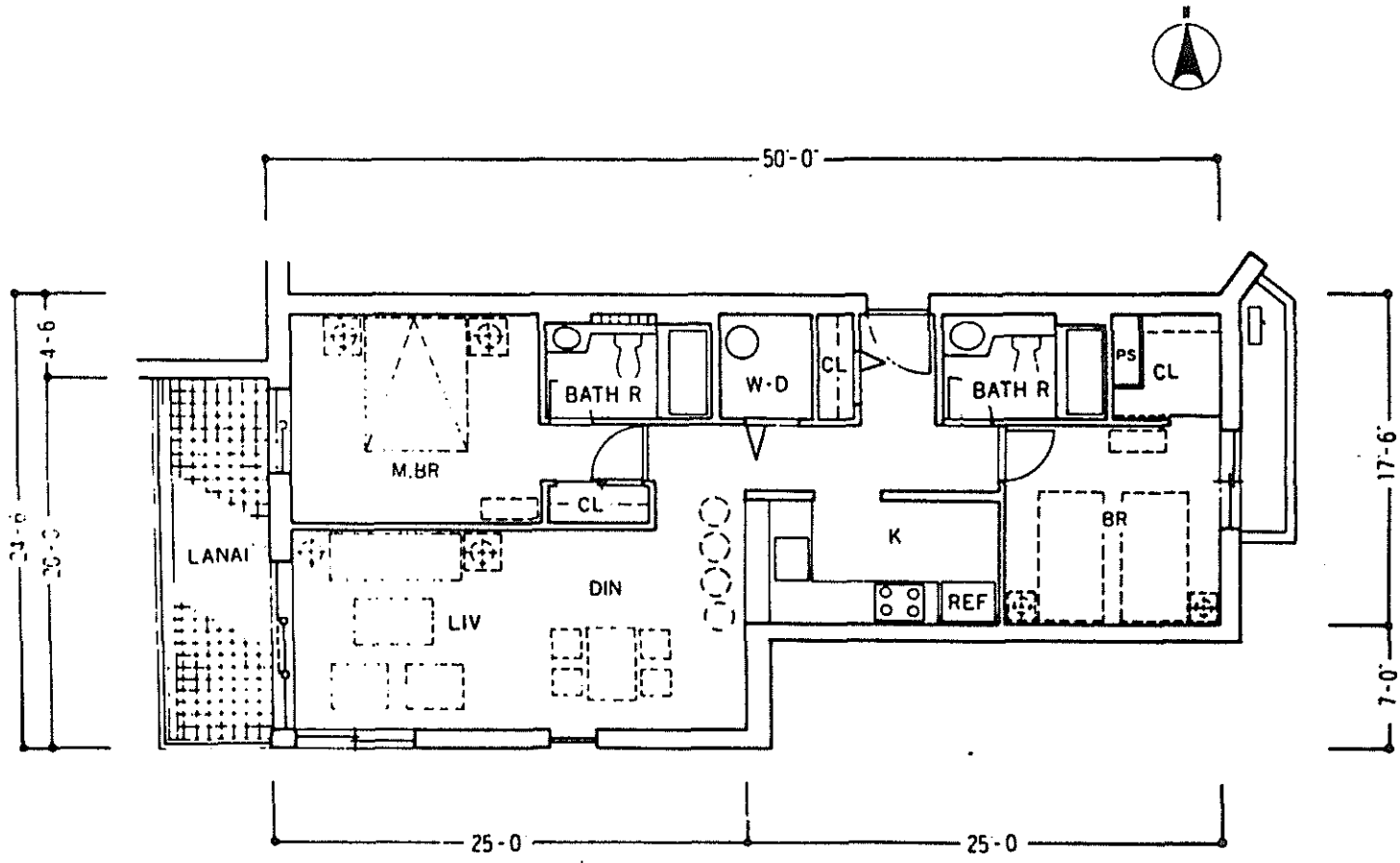


1. The furniture indicated by dash lines are included in the furnished rooms.
2. Even if the furniture has a dash under it, the furniture is not included in the unfurnished rooms.

IATSUHO OKA TOWERS UNIT PLAN

B3 Type

	Ea
1 ~ 3 F	952.92 SF
4 ~ 8 F	962.76 SF
9 ~ 12F	980.69 SF

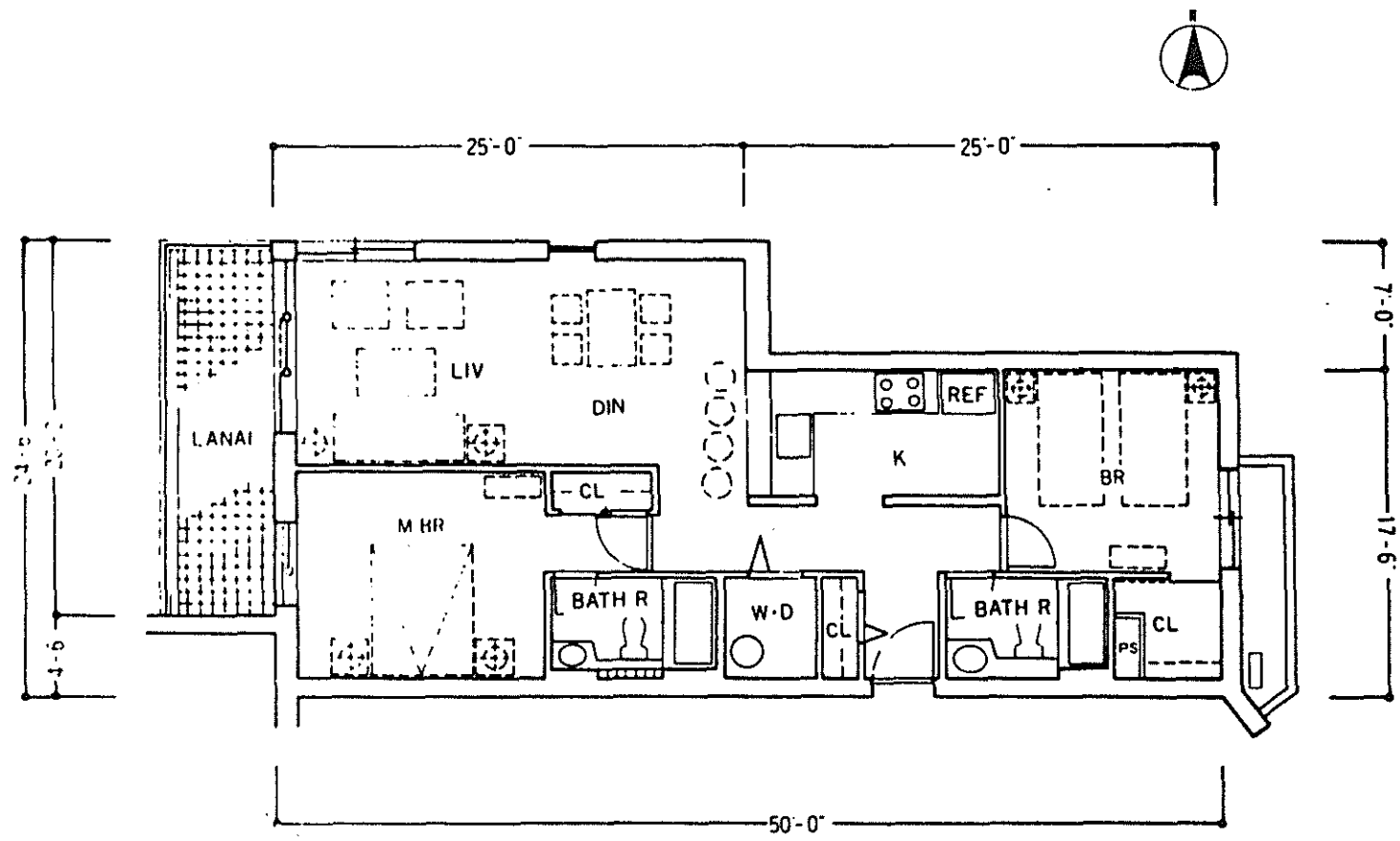


1. The furniture indicated by dash lines are not in the furnished rooms.
2. Even if the furniture has a dash under it, the

WATSUHO OKA TOWERS UNIT PLAN

B'3 Type

1 ~ 3 F	952.92 SF
4 ~ 8 F	962.76 SF
9 ~ 12 F	980.69 SF

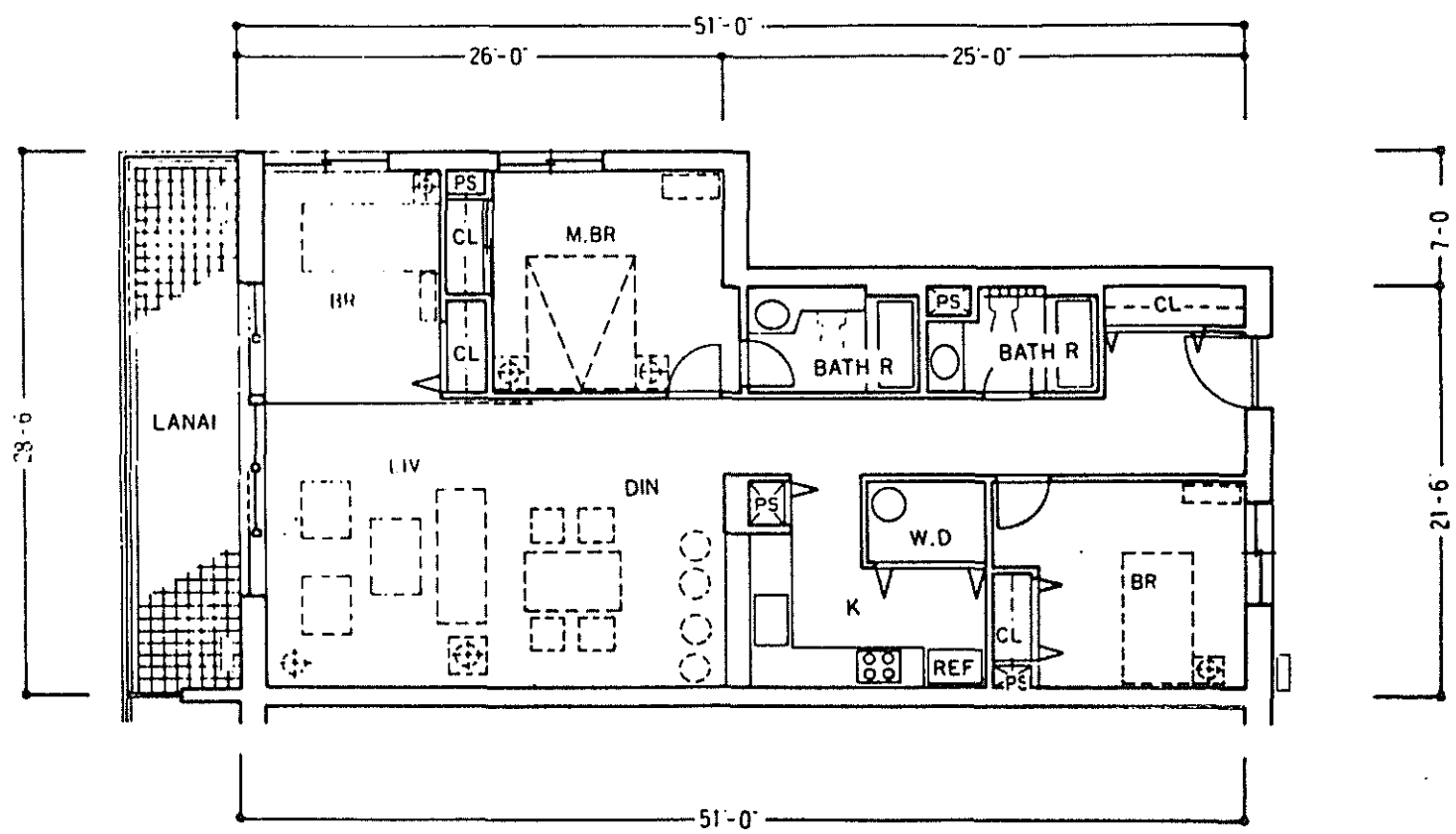


1. The furniture indicated by dash lines are included in the furnished rooms.
2. Even if the furniture has a dash under it, the furniture is not included in the unfurnished rooms.

HATSUHO OKA TOWERS
UNIT PLAN

C'1 Type

4 ~ 8 F	1202.72 SF
9 ~ 12F	1218.68 SF



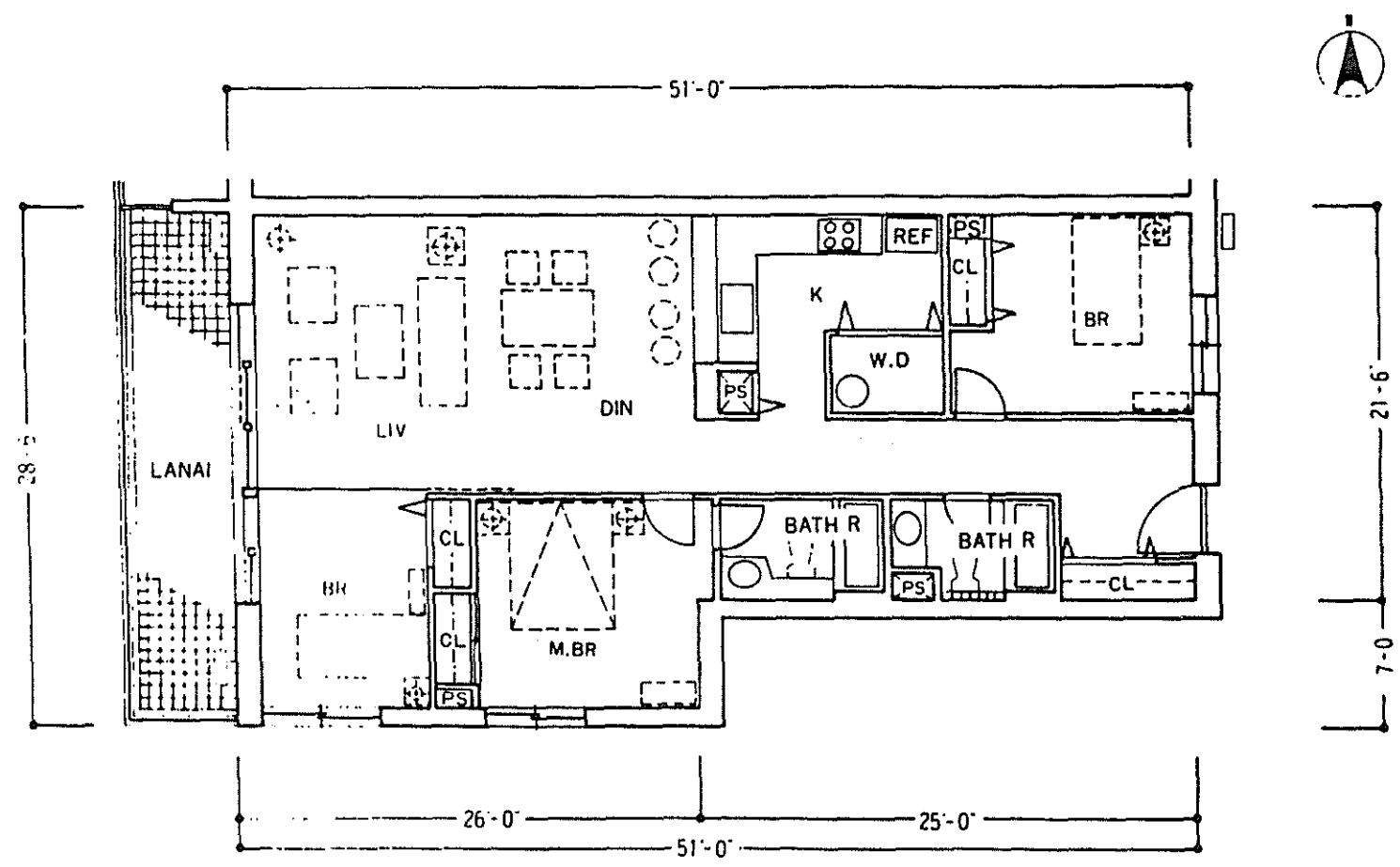
1. The furniture indicated by dash lines are included in the furnished room.
2. Even if the furniture has a dash under it, the furniture is not included in the unfurnished room.

HATSUHO OKA TOWERS

UNIT PLAN

C1 Type

Ea	
4 ~ 8 F	1202.72 SF
9 ~ 12F	1218.68 SF

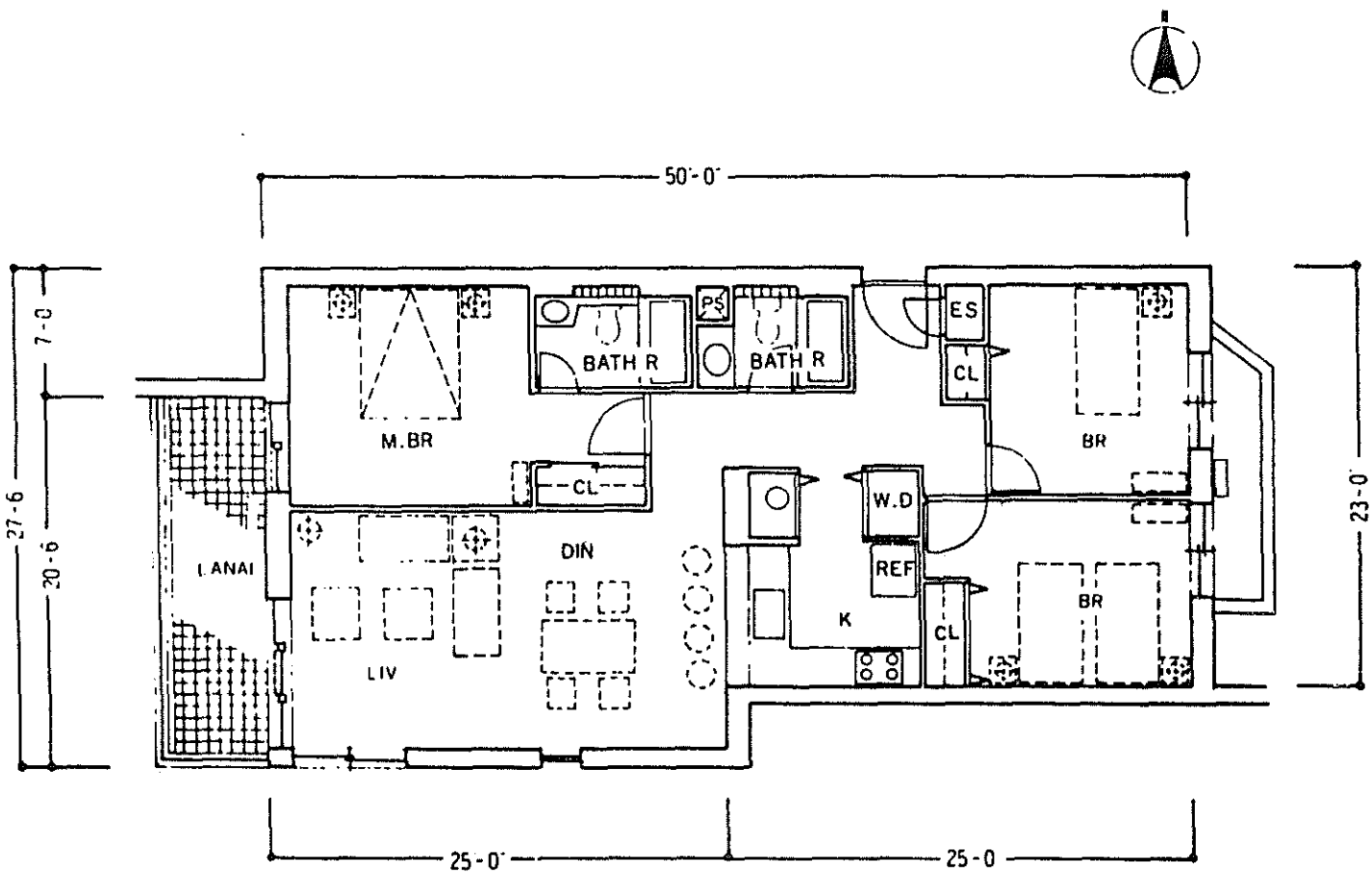


1. The furniture indicated by dash lines are included in the furnished rooms.
2. Even if the furniture has a dash under it, the furniture is not included in the unfurnished room.

MATSUHO OKA TOWERS
UNIT PLAN

G2 Type

E _a	
1 ~ 3 F	1156.35 SF
4 ~ 8 F	1167.41 SF
9 ~ 12F	1187.15 SF

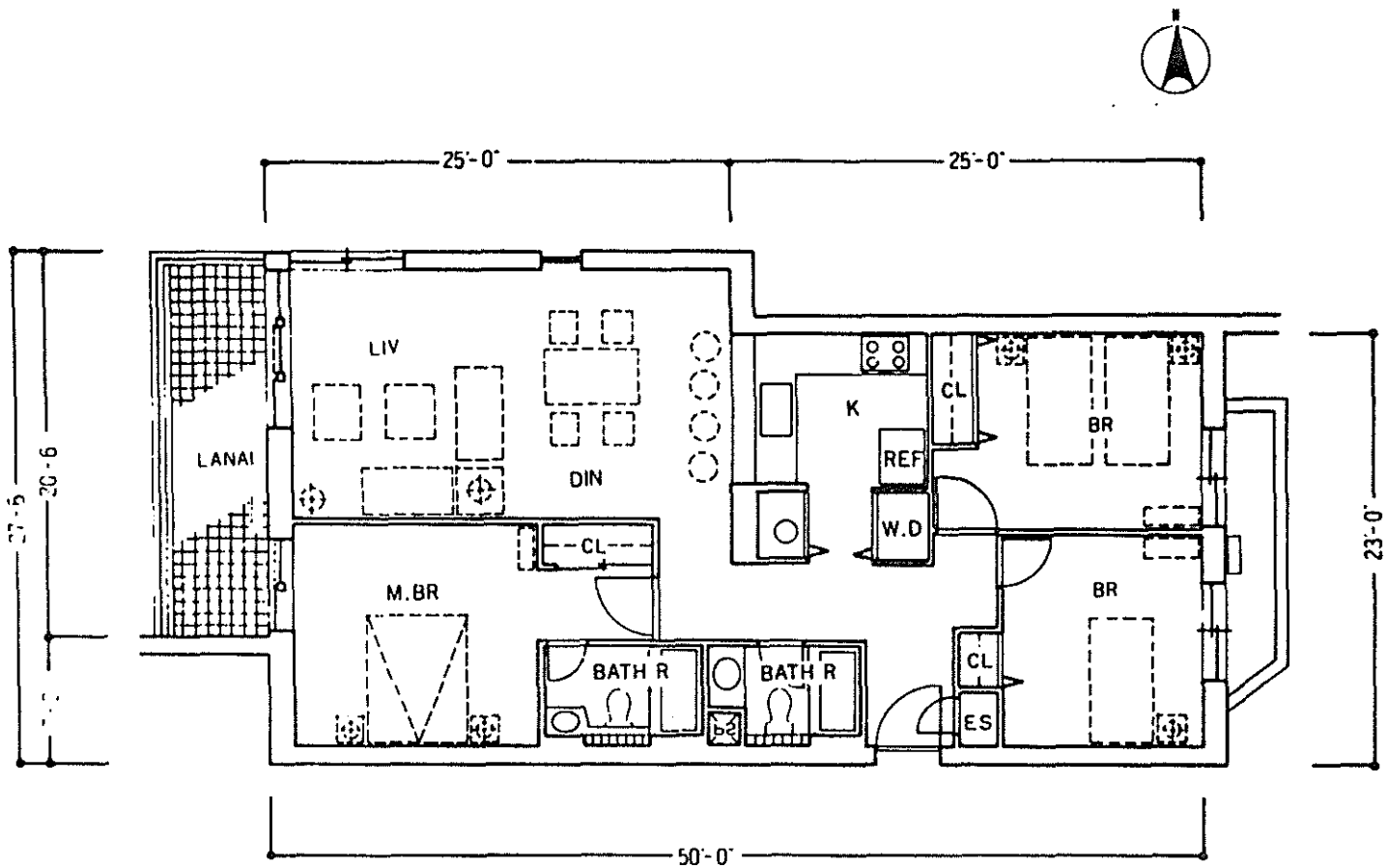


1. The furniture indicated by dash lines are incl in the furnished rooms.
 2. Even if the furniture has a dash under it, that

IATSUHO OKA TOWERS
UNIT PLAN

C'2 Type

	Ea
1 ~ 3 F	1156.35 SF
4 ~ 8 F	1167.41 SF
9 ~ 12F	1187.15 SF

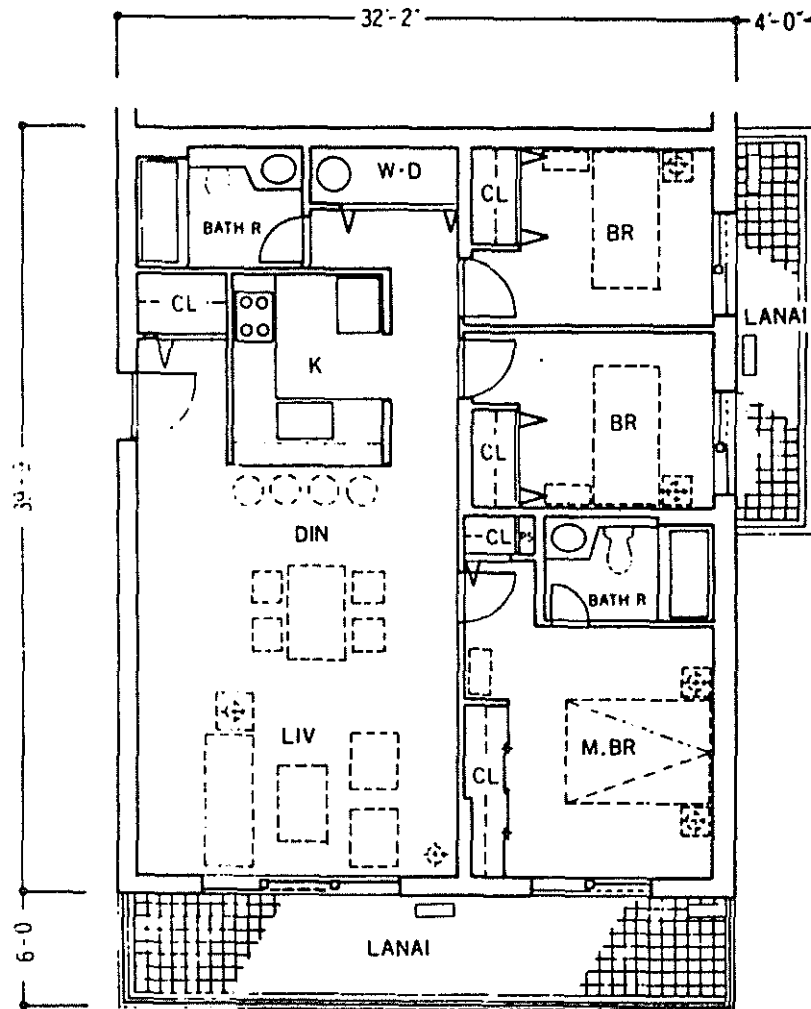


1. The furniture indicated by dash lines are not in the furnished rooms.
 2. Even if the furniture has a dash under it, the price is not included in the unit price.

IATSUHO OKA TOWERS UNIT PLAN

G3 Type

Ea	
B1~3F	1127.58 SF
4~8F	1138.81 SF
9F	1158.25 SF

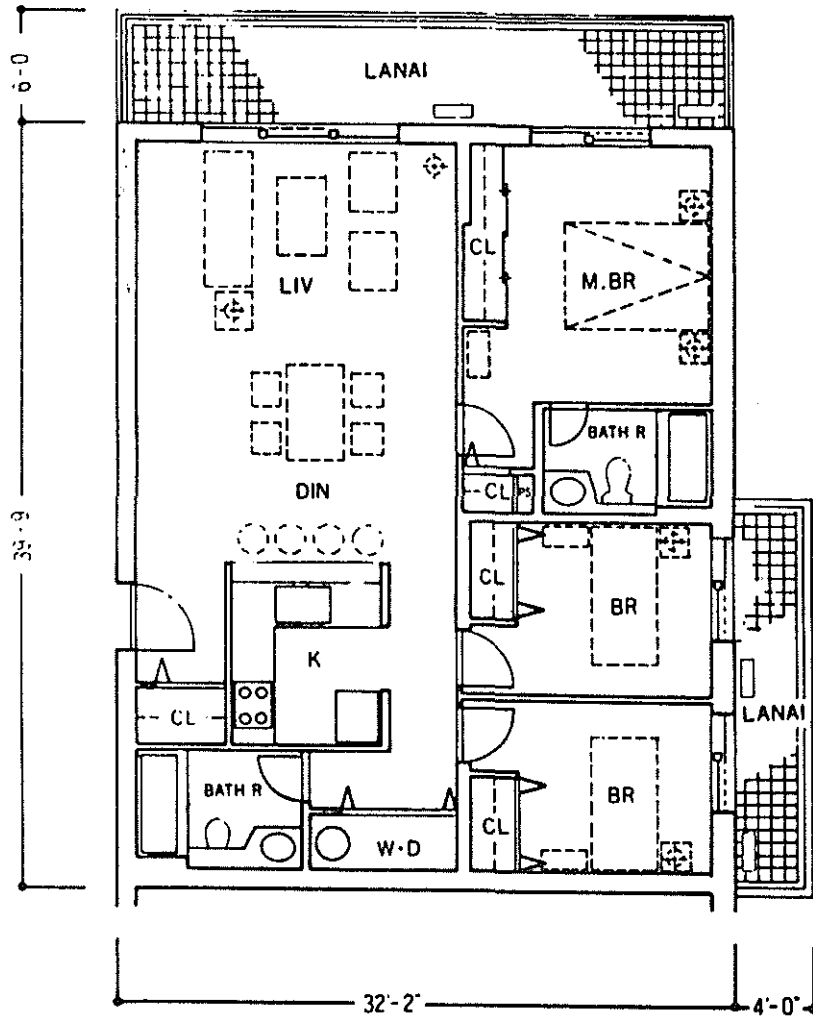


1. The furniture indicated by dash lines are included in the furnished rooms.
2. Even if the furniture has a dash under it, the furniture is not included in the unfurnished rooms.

IATSUHO OKA TOWERS UNIT PLAN

C'3 Type

Ea	
B1~3F	1127.58 SF
4~8 F	1138.81 SF
9 F	1158.25 SF

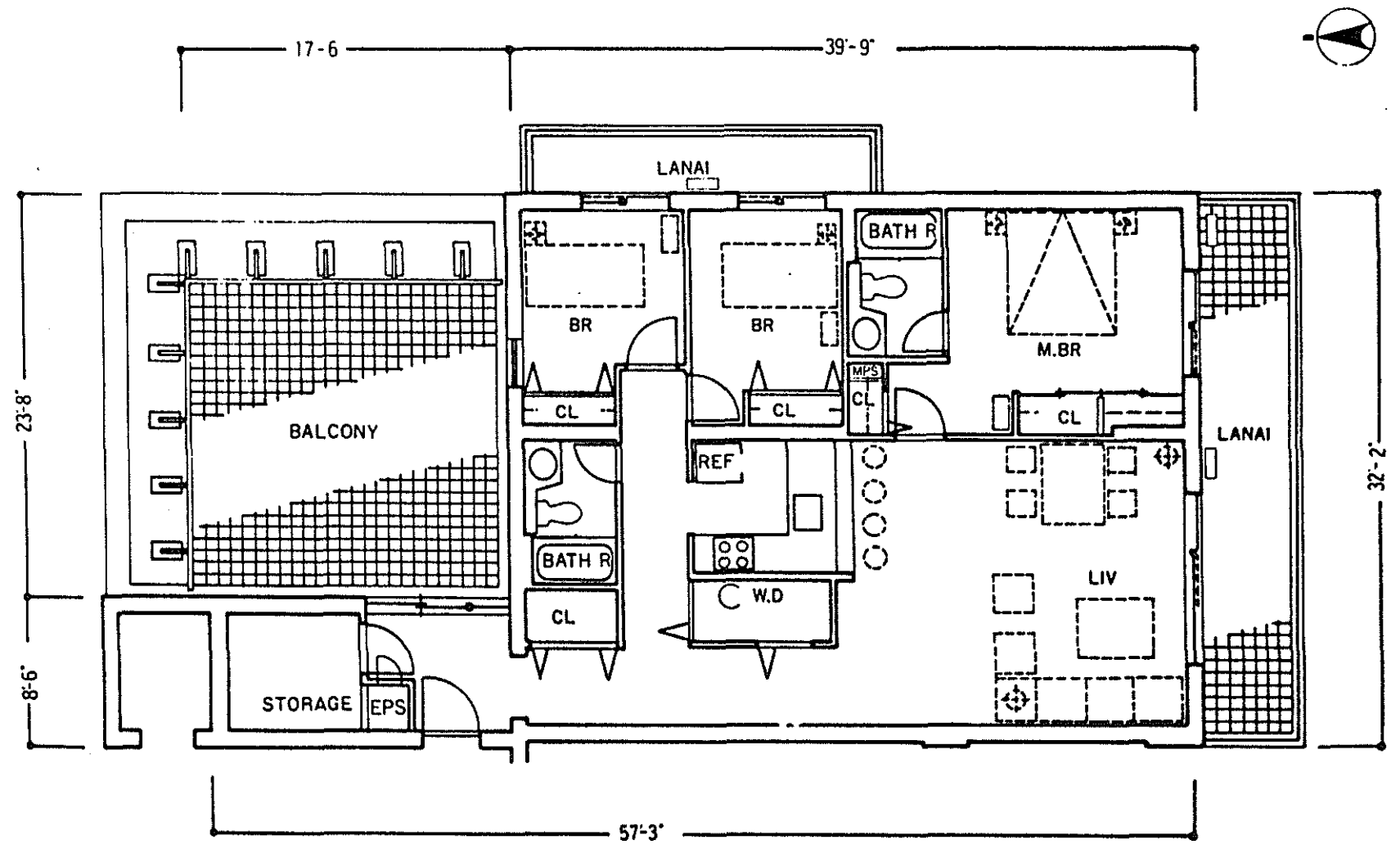


1. The furniture indicated by dash lines are in the furnished rooms.
2. Even if the furniture has a dash under it, it is not included in the furnished...

HATSUHO OKA TOWERS
UNIT PLAN

C4 Type

	Ea
10F	1282.45 SF

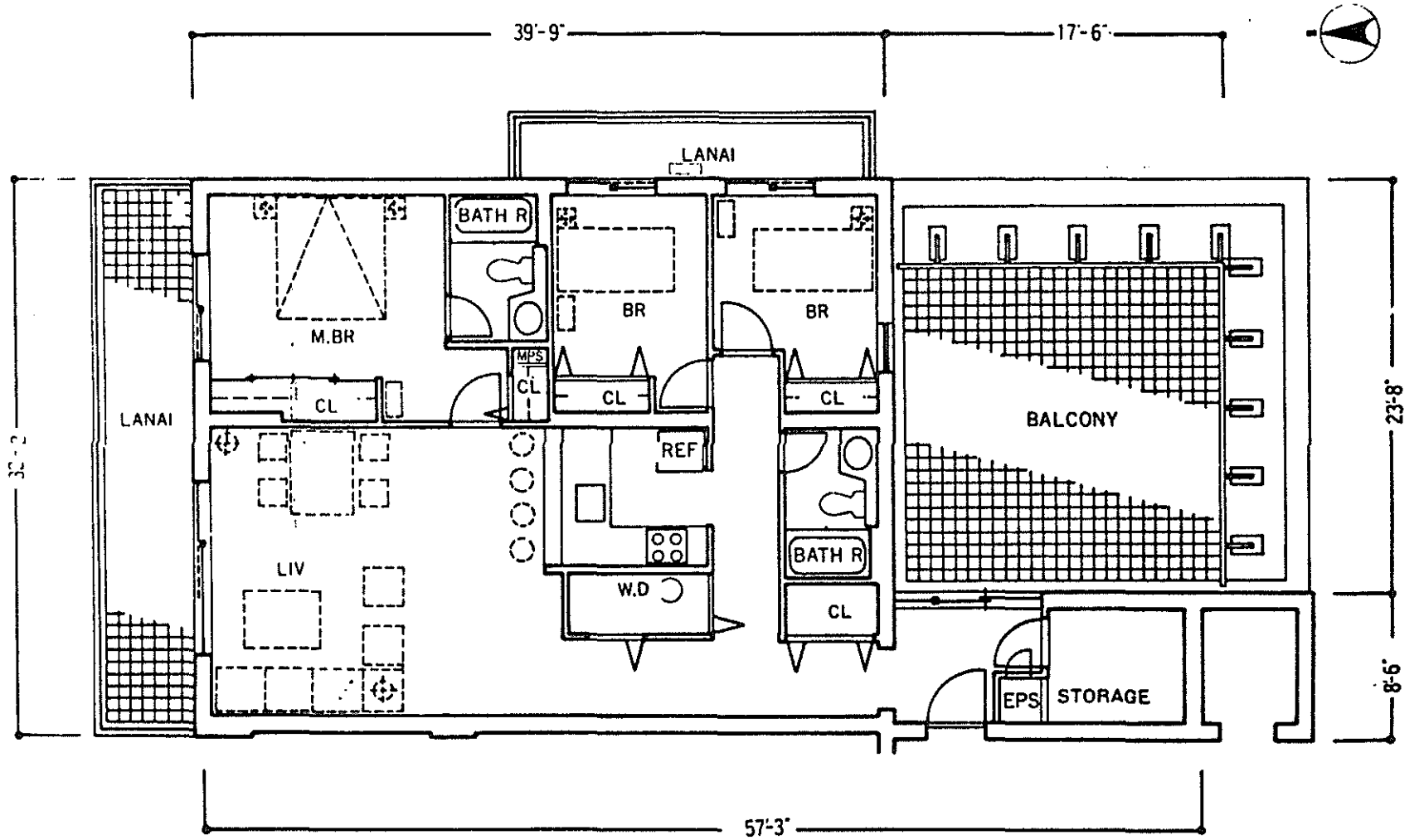


1. The furniture indicated by dash lines are in the furnished rooms.
2. Even if the furniture has a dash under it, niture is not included in the unfurnished

HATSUHO OKA TOWERS
UNIT PLAN

C'4 Type

	Ea
10F	1282.45 SF



1. The furniture indicated by dash lines are in the furnished rooms.
2. Even if the furniture has a dash under it, niture is not included in the unfurnished

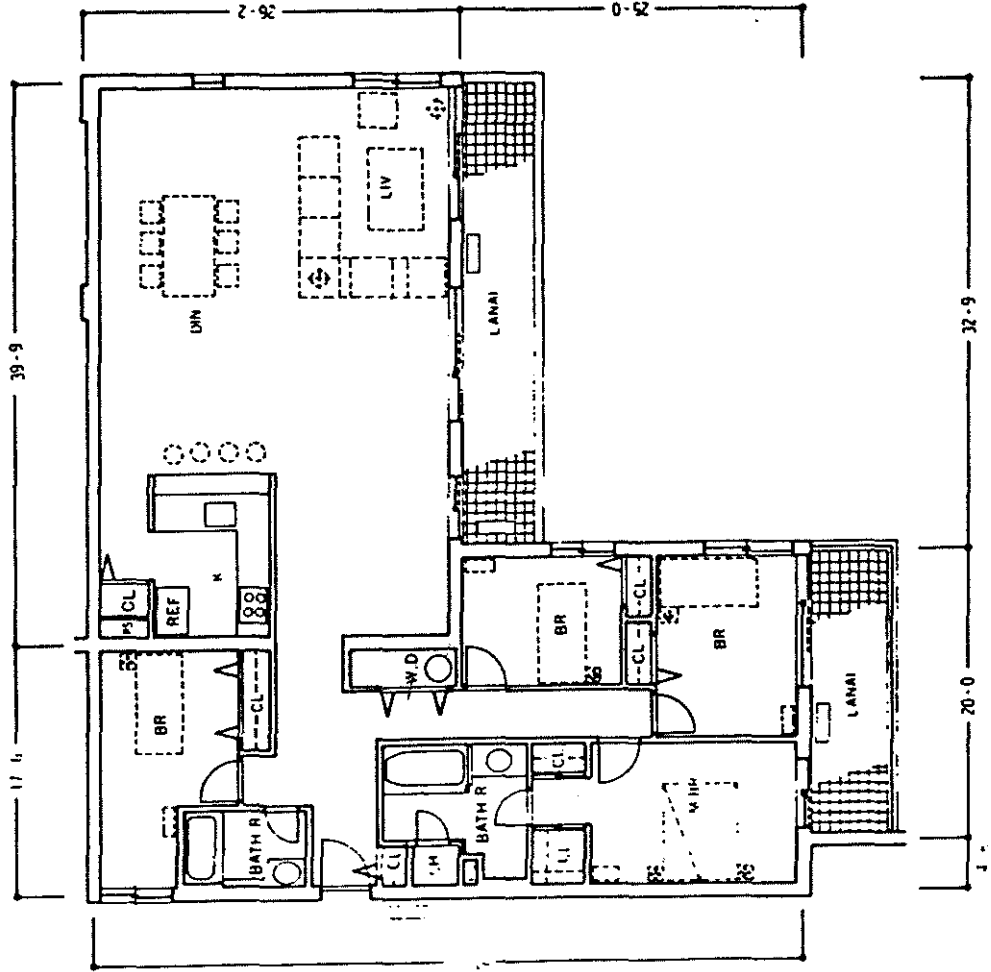
HATSUHO OKA TOWERS UNIT PLAN.

D1 Type

E.o

10F

1930.12 SF

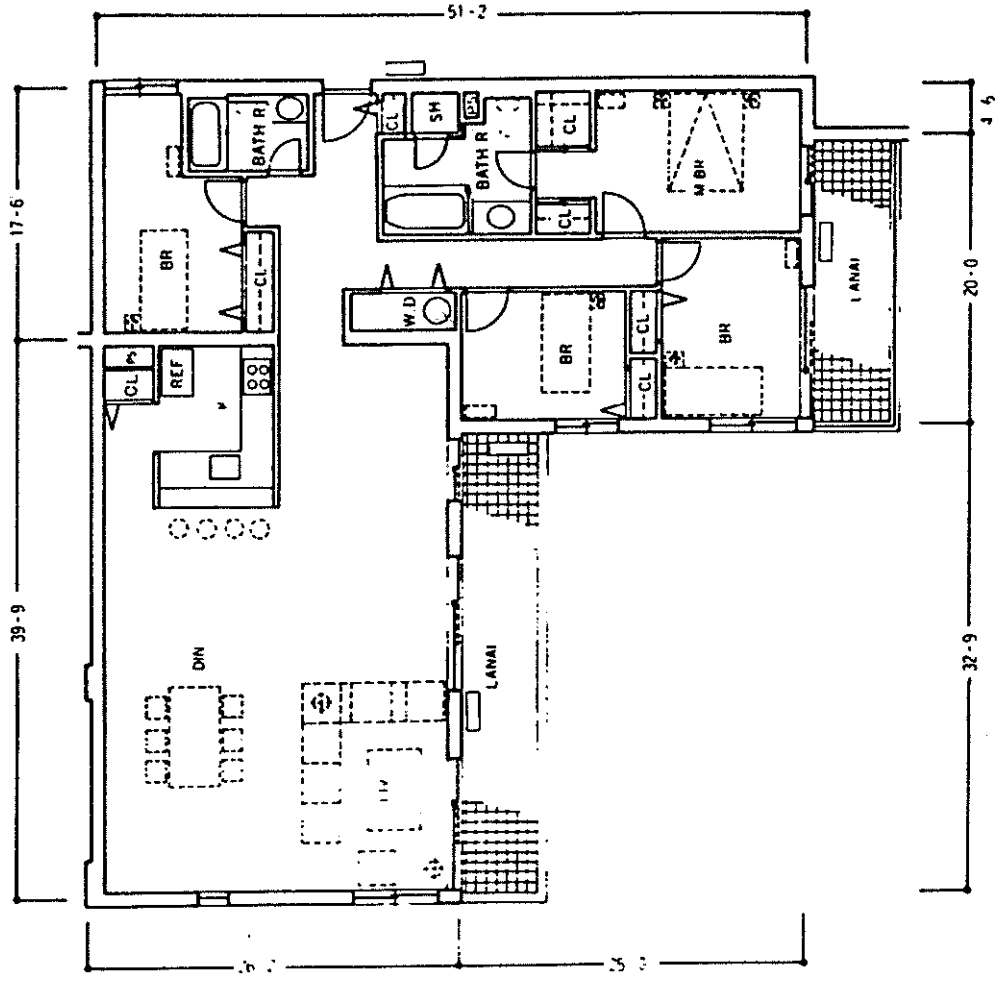


1. The furniture indicated by dash lines are in the furnished rooms.
2. Even if the furniture has a dash under it, it is not included in the unfurnished.

HATSUHO OKA TOWERS UNIT PLAN

D'1 Type

Ea
10F 1930.12 SF

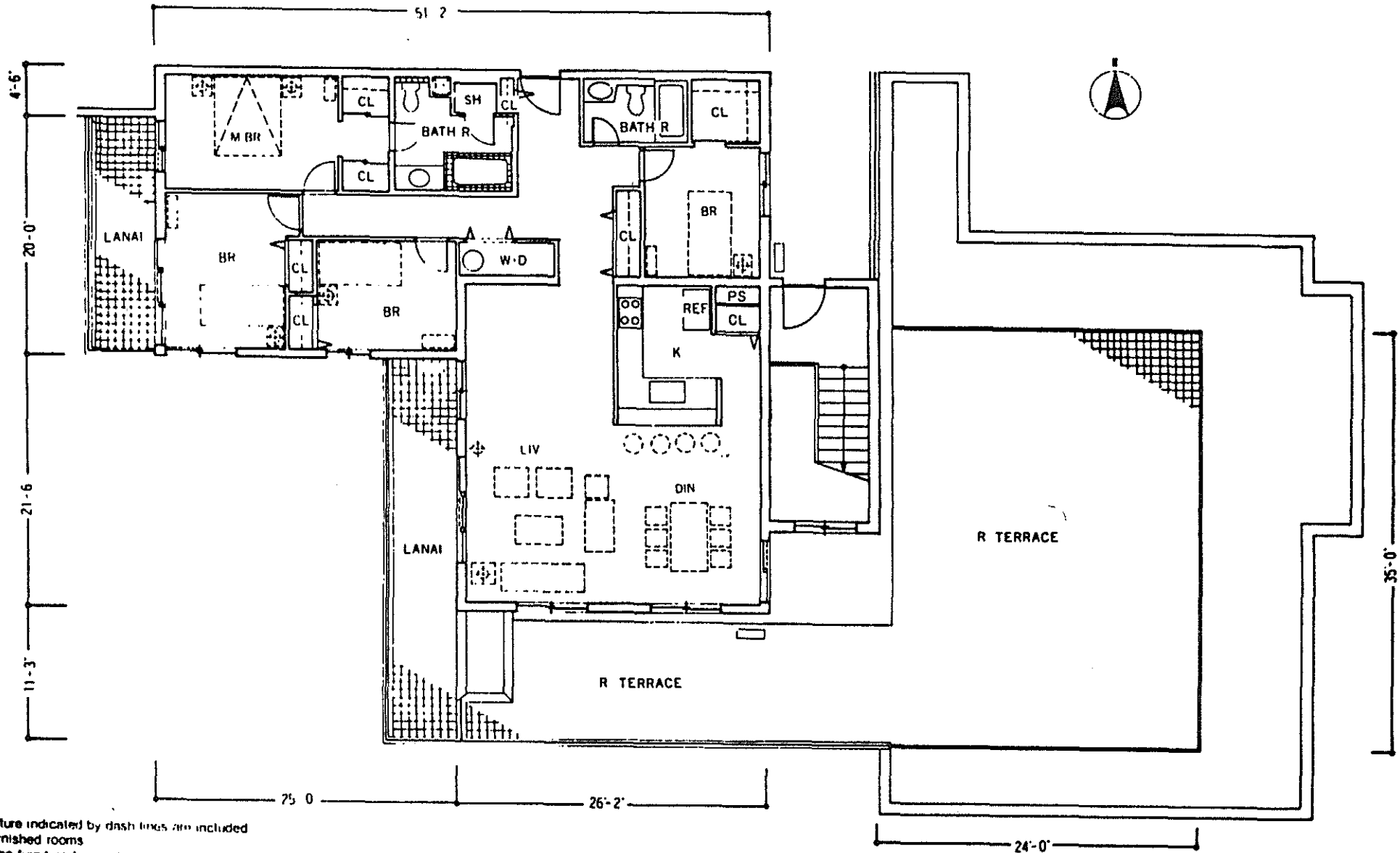


1. The furniture indicated by dash lines are in the furnished rooms.
2. Even if the furniture has a dash under it, it is not included in this unit.

HATSUHO OKA TOWERS UNIT PLAN

D2 Type

	Ea
11F	1655.43 SF

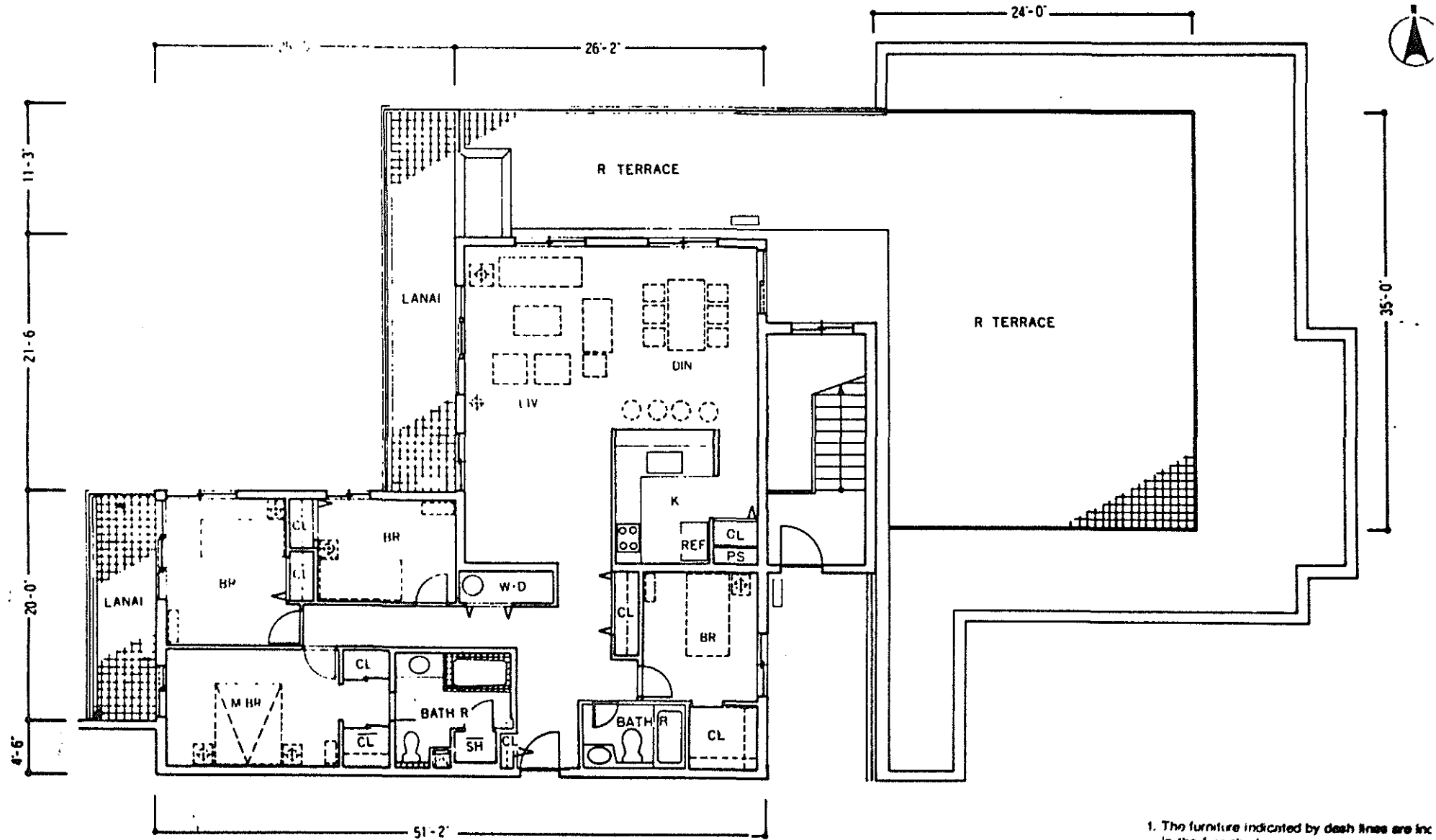


1. The furniture indicated by dash lines are included in the furnished rooms
2. Even if the furniture has a dash under it, that furniture is not included in the unfurnished rooms

IATSUHO OKA TOWERS UNIT PLAN

D'2 Type

	Ea
11F	1655.43 SF

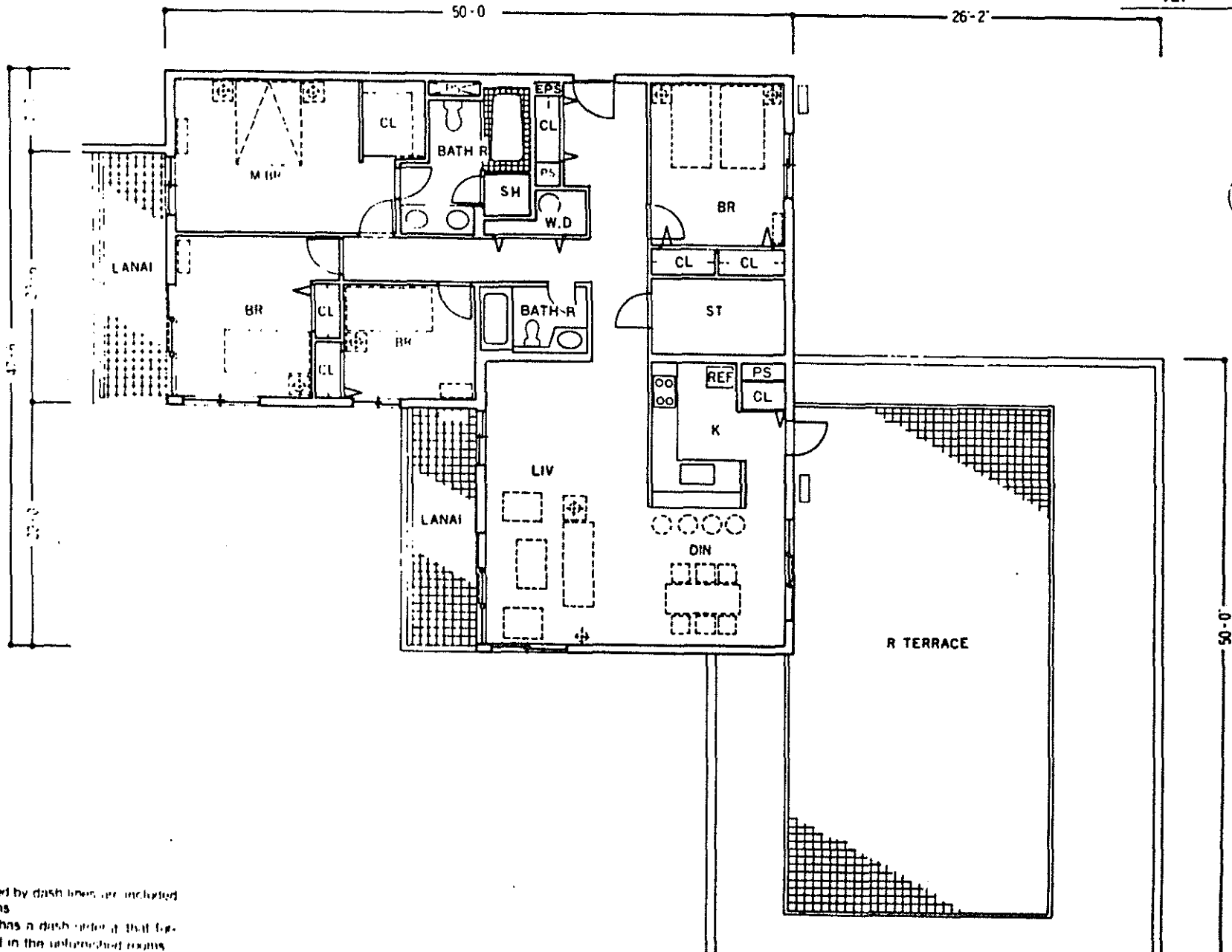


1. The furniture indicated by dash lines are included in the furnished rooms.
2. Even if the furniture has a dash under it, the furniture is not included in the unfurnished rooms.

YATSUHO OKA TOWERS UNIT PLAN

D3 Type

Ea
12F 1751.36 SF

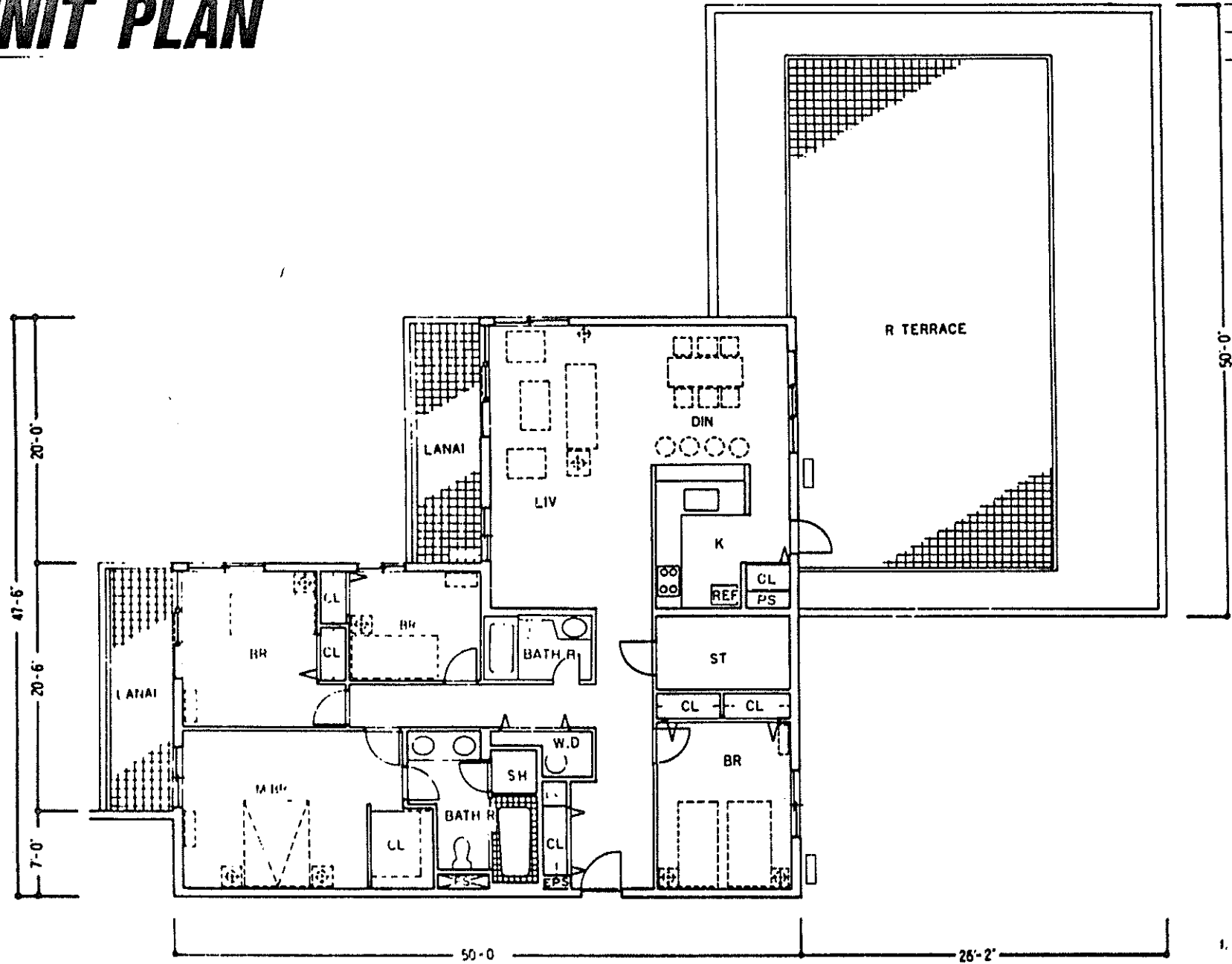


The furniture indicated by dash lines are included in the furnished rooms.
Even if the furniture has a dash line, that furniture is not included in the unfurnished rooms.

MATSUHO OKA TOWERS UNIT PLAN

D'3 Type

	Ea
12F	1751.36 SF



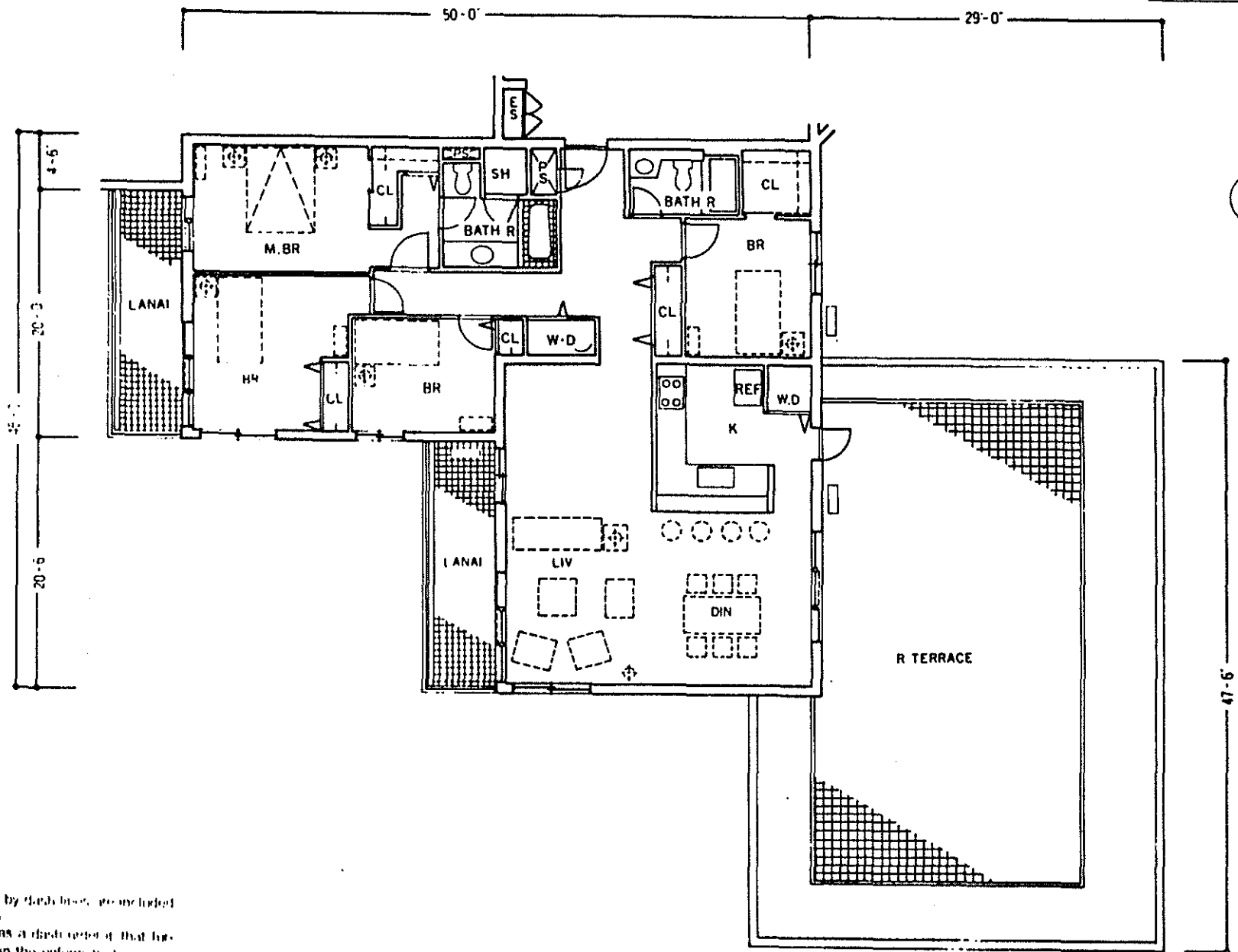
1. The furniture indicated by dash lines are included in the furnished rooms.
2. Even if the furniture has a dash under it, the furniture is not included in the unfurnished room.

HATSUHO OKA TOWERS

UNIT PLAN

D4 Type

	Ea
14F	1615.72 SF

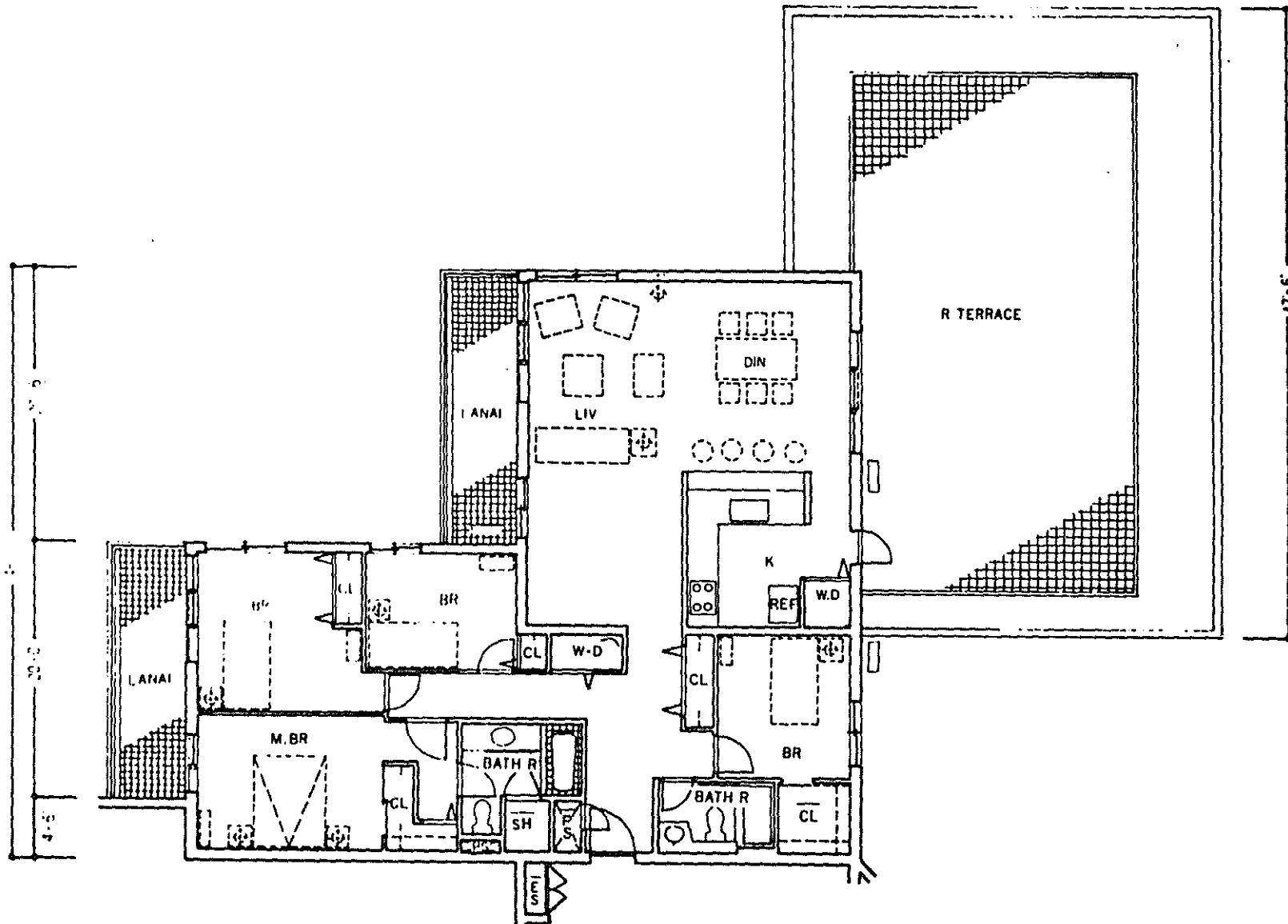


1. The furniture indicated by dash lines are included in the furnished rooms.
2. Even if the furniture has a dash line if that furniture is not included in the unfurnished rooms.

HATSUHO OKA TOWERS UNIT PLAN

D'4 Type

14F 1615.72 SF

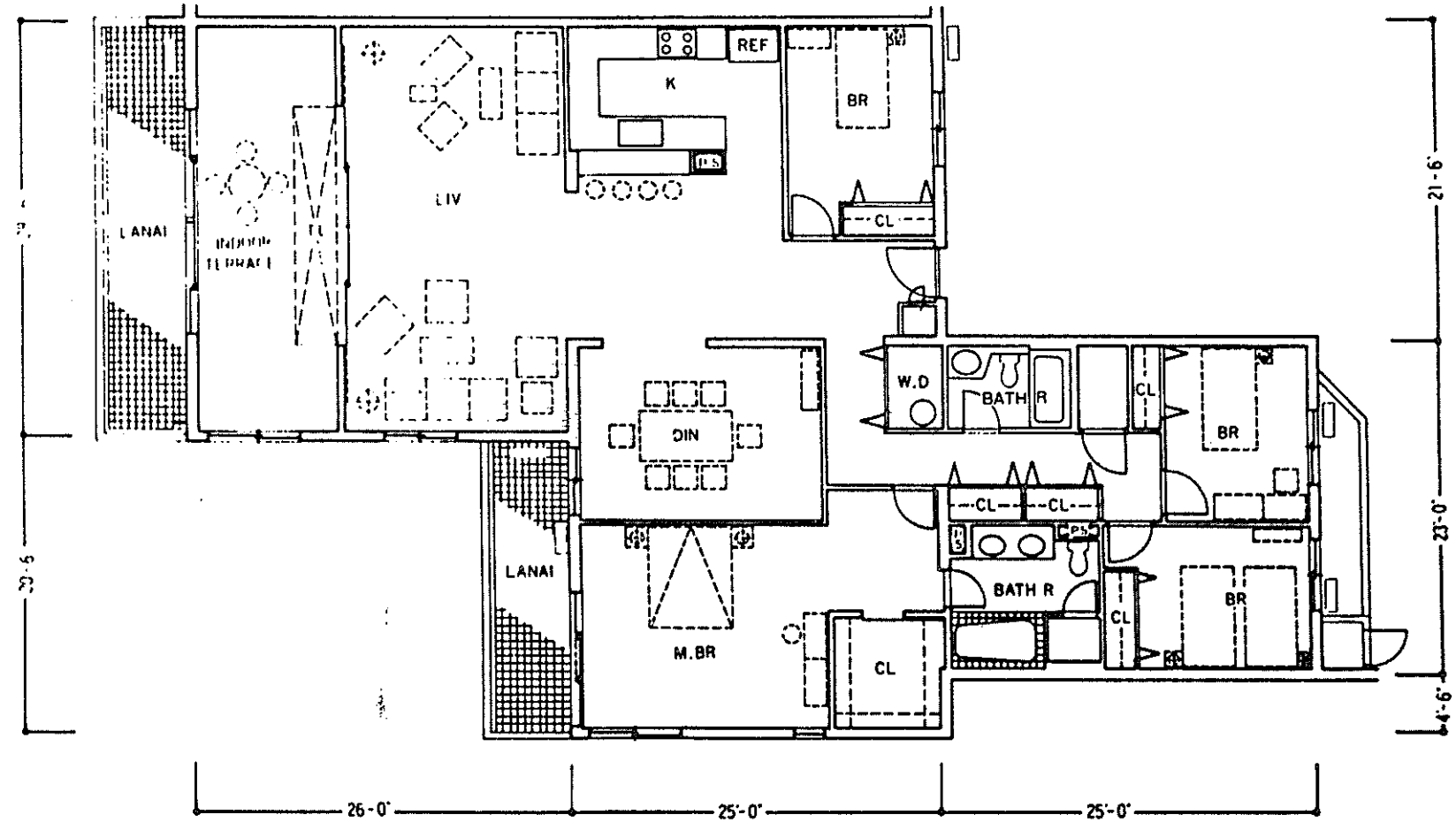


Furniture indicated by dash lines are included in the furnished rooms. Furniture with a dash under it that furniture is not included in the unfurnished rooms.

IATSUHO OKA TOWERS UNIT PLAN

D5 Type

	Ea
14F	2411.87 SF



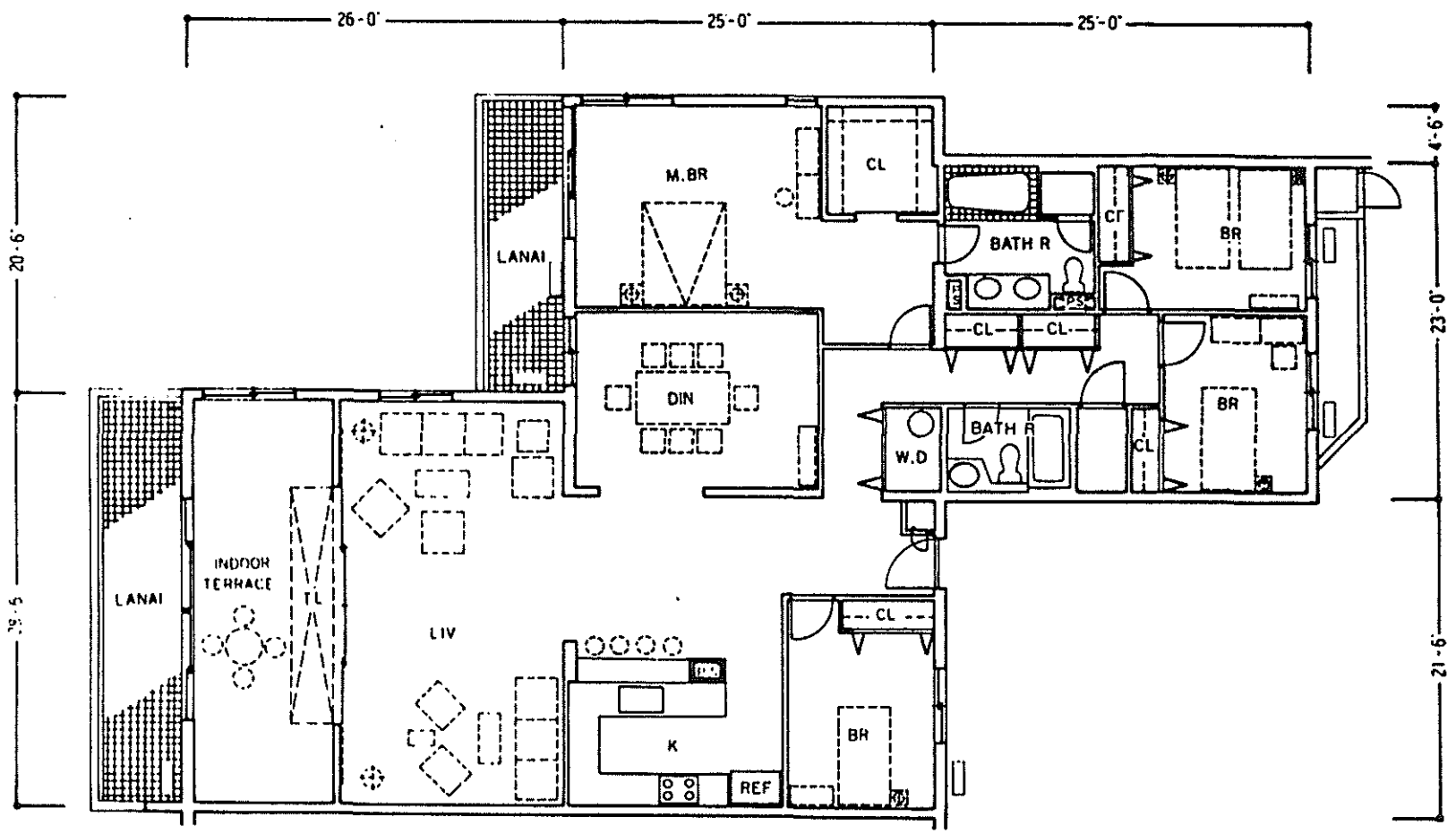
1. The furniture indicated by dash lines are k in the furnished rooms.
2. Even if the furniture has a dash under it, furniture is not included in the unfurnished i

HATSUHO OKA TOWERS

UNIT PLAN

D'5 Type

	Ea
14F	2411.87 SF

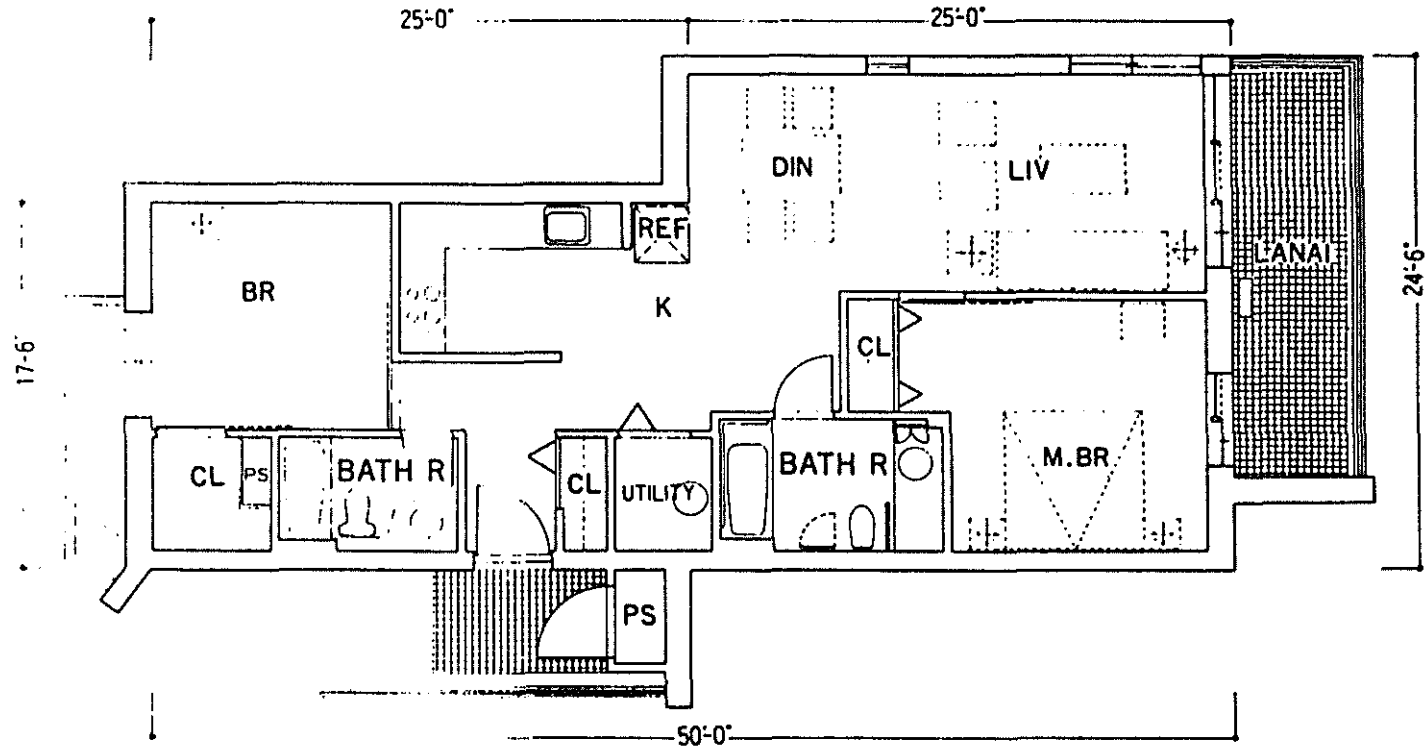


1. The furniture indicated by dash lines are in the furnished rooms.
2. Even if the furniture has a dash under it, furniture is not included in the unfurnished.

HATSUHO OKA TOWERS
UNIT PLAN

H1 Type

	Ea
1 F	952.92 SF



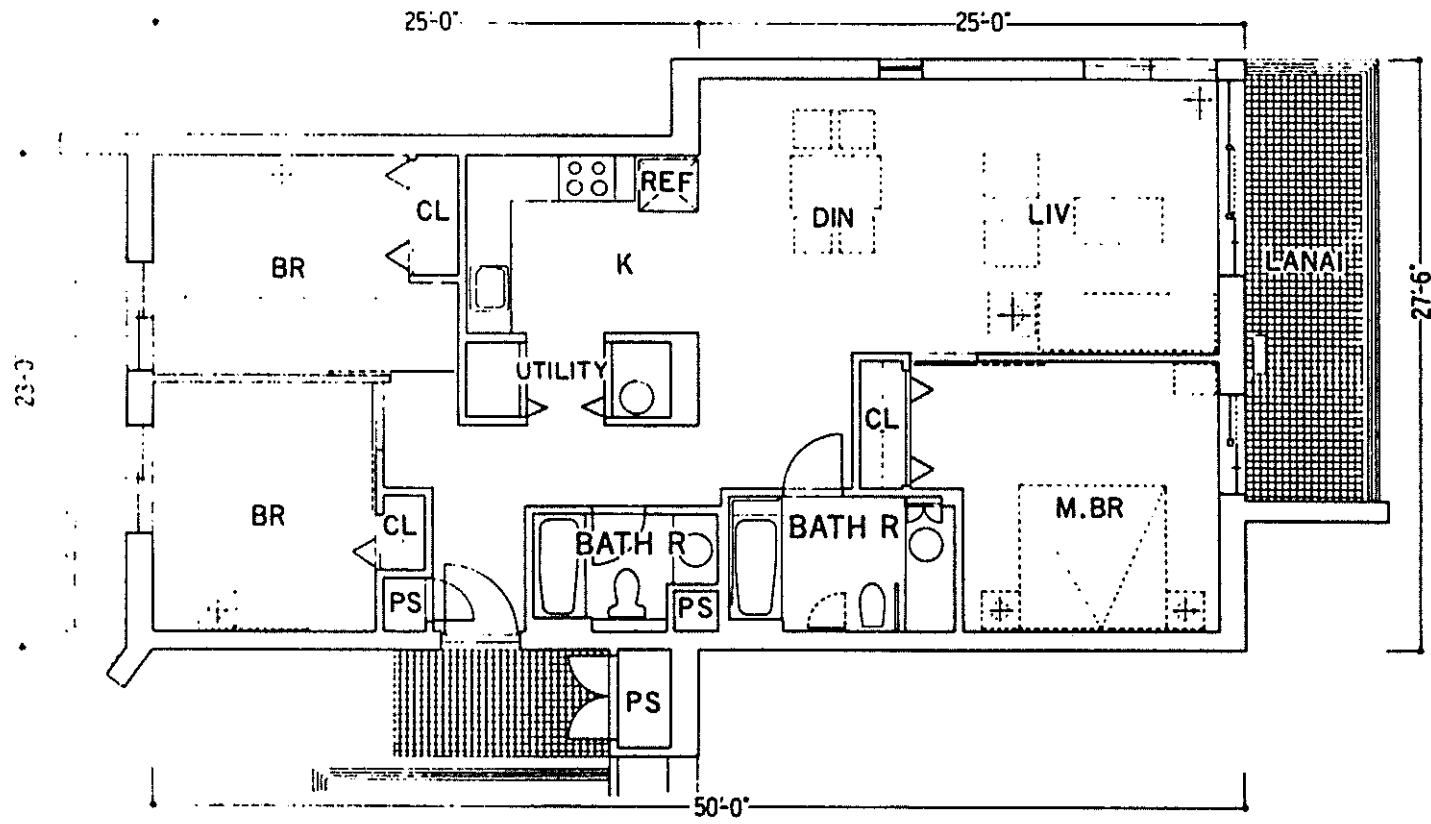
1. The furniture indicated by dash lines are included in the furnished rooms.
 2. Even if the furniture has a dash under it, the furniture is not included in the unfurnished unit.

HATSUHO OKA TOWERS

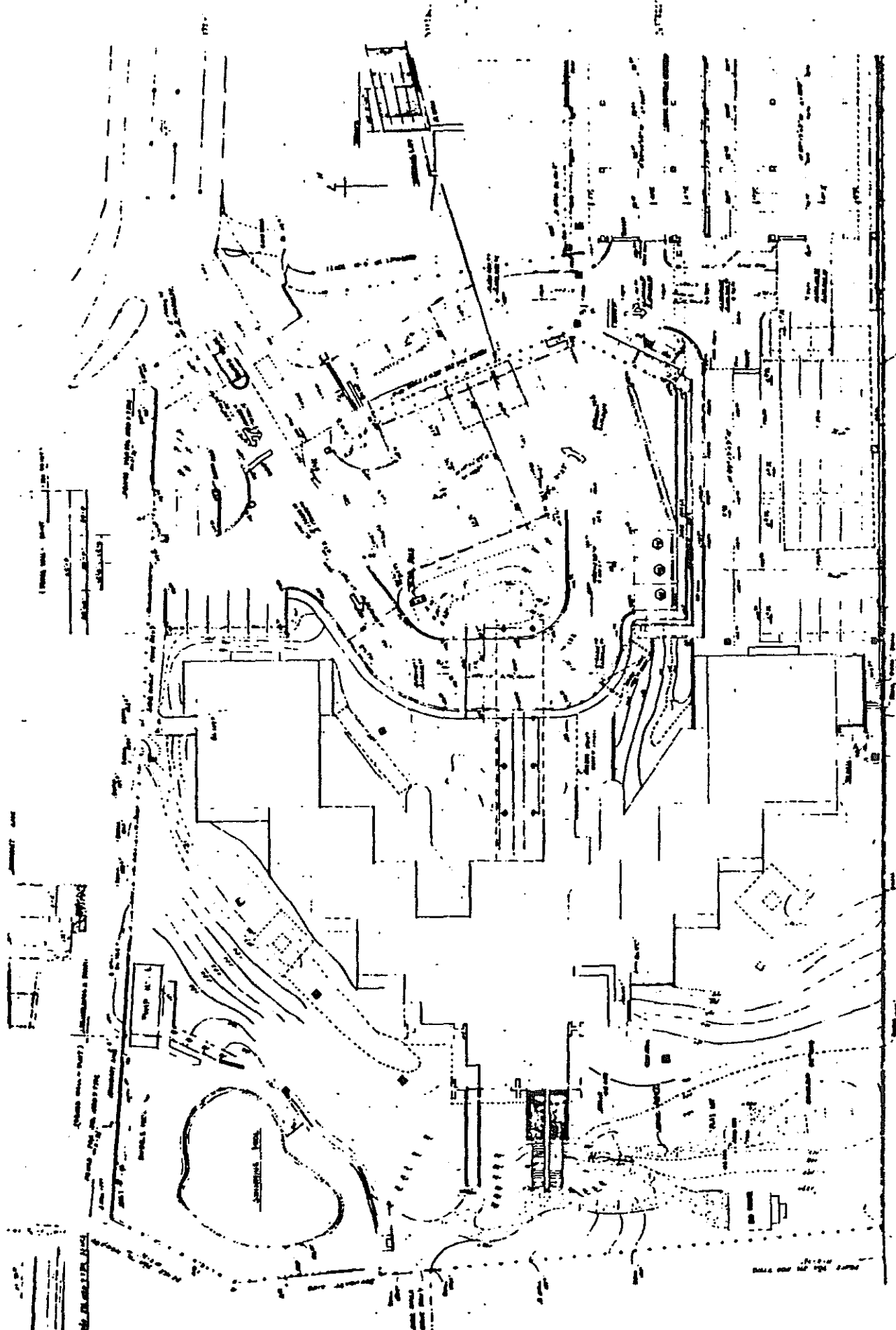
UNIT PLAN

H2 Type

	Ea
1 F	1156.35 SF



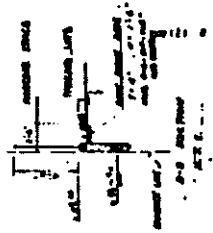
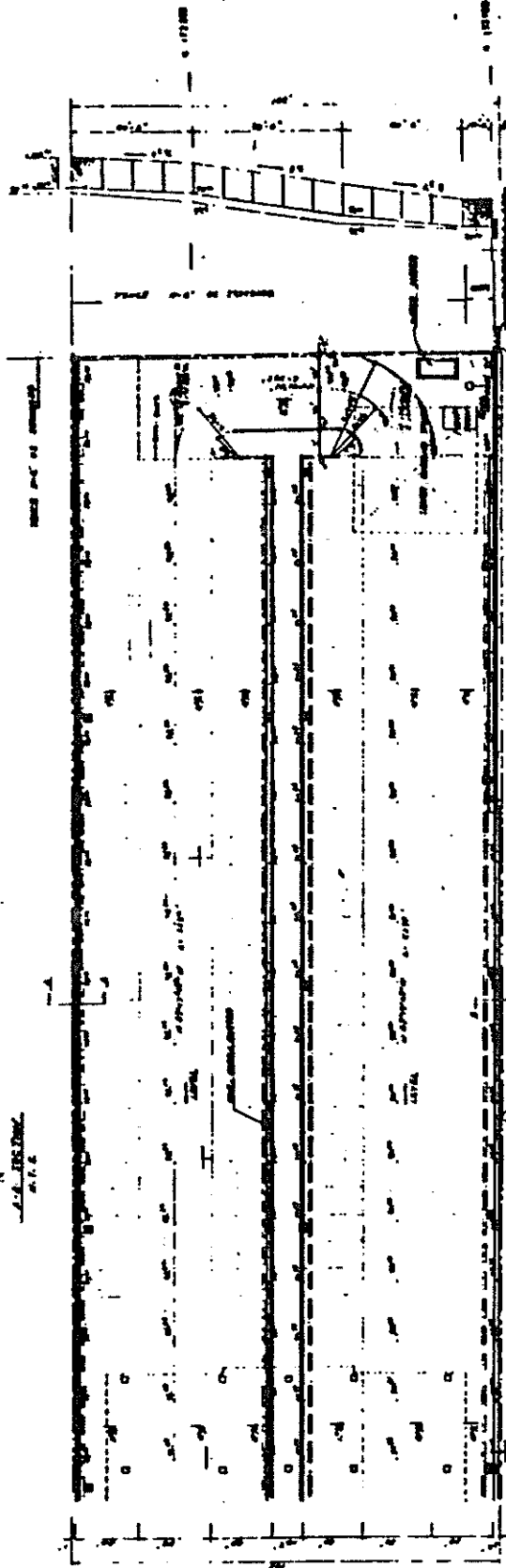
1. The furniture indicated by dash lines are not included in the furnished rooms.
2. Even if the furniture has a dash under it, it is not included in the furnished rooms.



1	2	3	4	5	6	7	8	9	10	11	12	13	14	15	16	17	18	19	20	21	22	23	24	25	26	27	28	29	30	31	32	33	34	35	36	37	38	39	40	41	42	43	44	45	46	47	48	49	50	51	52	53	54	55	56	57	58	59	60	61	62	63	64	65	66	67	68	69	70	71	72	73	74	75	76	77	78	79	80	81	82	83	84	85	86	87	88	89	90	91	92	93	94	95	96	97	98	99	100
---	---	---	---	---	---	---	---	---	----	----	----	----	----	----	----	----	----	----	----	----	----	----	----	----	----	----	----	----	----	----	----	----	----	----	----	----	----	----	----	----	----	----	----	----	----	----	----	----	----	----	----	----	----	----	----	----	----	----	----	----	----	----	----	----	----	----	----	----	----	----	----	----	----	----	----	----	----	----	----	----	----	----	----	----	----	----	----	----	----	----	----	----	----	----	----	----	----	----	-----

GENERAL LAYOUT PLAN (1)

SCALE 1:200



GENERAL LAYOUT PLAN

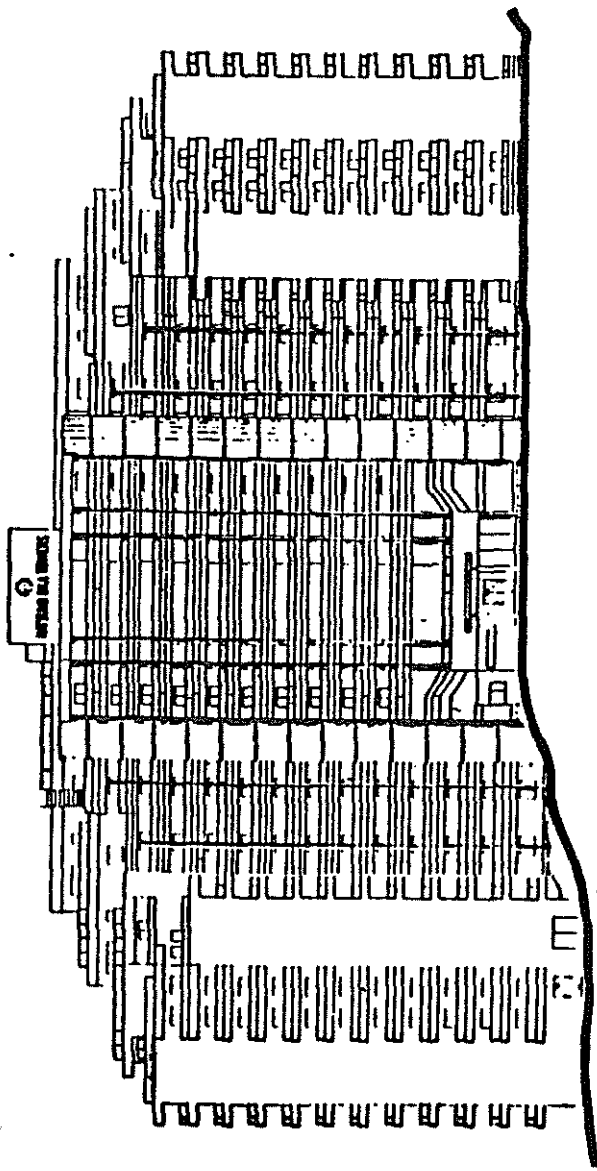
SCALE 1/8" = 1'-0"



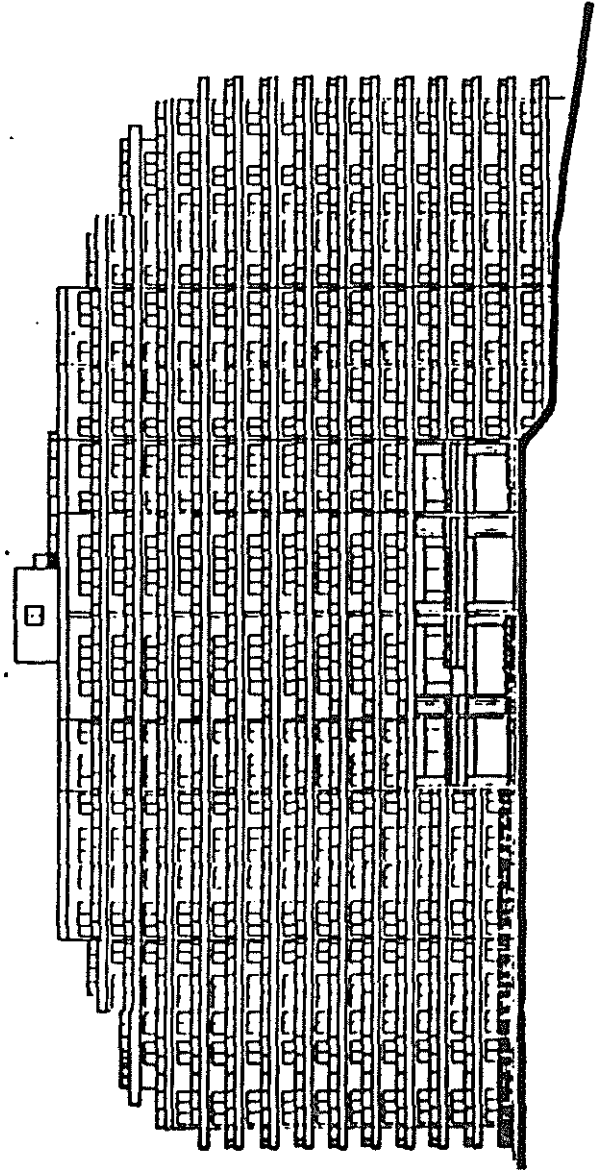
NO.	DATE	BY	REVISION
1			
2			
3			
4			
5			
6			
7			
8			
9			
10			
11			
12			
13			
14			
15			
16			
17			
18			
19			
20			
21			
22			
23			
24			
25			
26			
27			
28			
29			
30			
31			
32			
33			
34			
35			
36			
37			
38			
39			
40			
41			
42			
43			
44			
45			
46			
47			
48			
49			
50			
51			
52			
53			
54			
55			
56			
57			
58			
59			
60			
61			
62			
63			
64			
65			
66			
67			
68			
69			
70			
71			
72			
73			
74			
75			
76			
77			
78			
79			
80			
81			
82			
83			
84			
85			
86			
87			
88			
89			
90			
91			
92			
93			
94			
95			
96			
97			
98			
99			
100			

ELEVATION

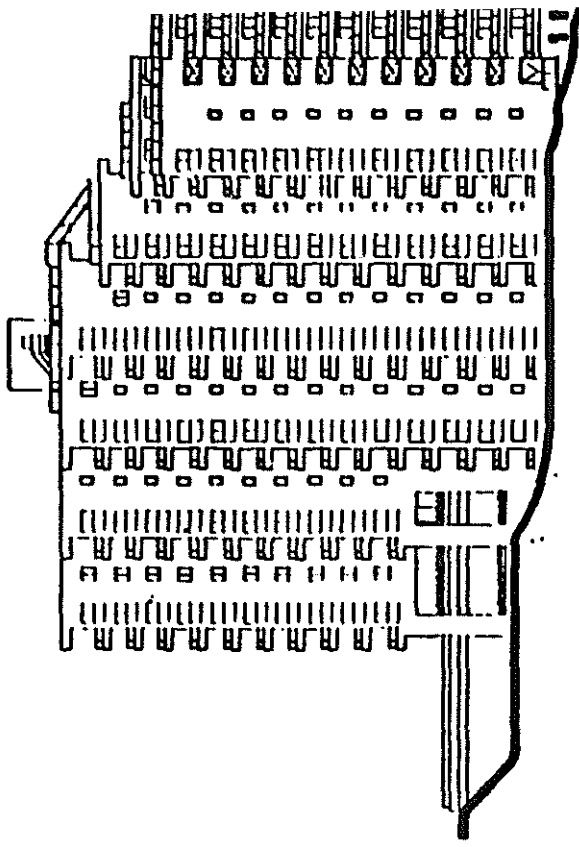
EAST ELEVATION



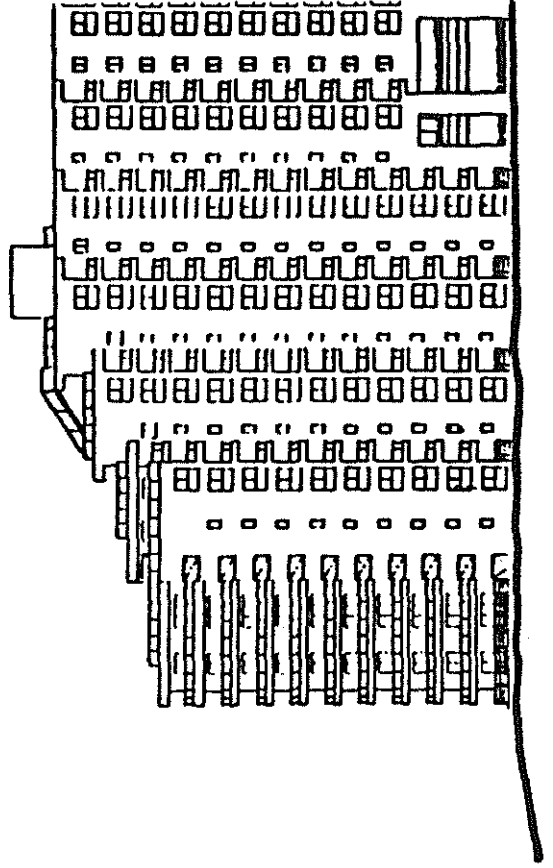
WEST ELEVATION



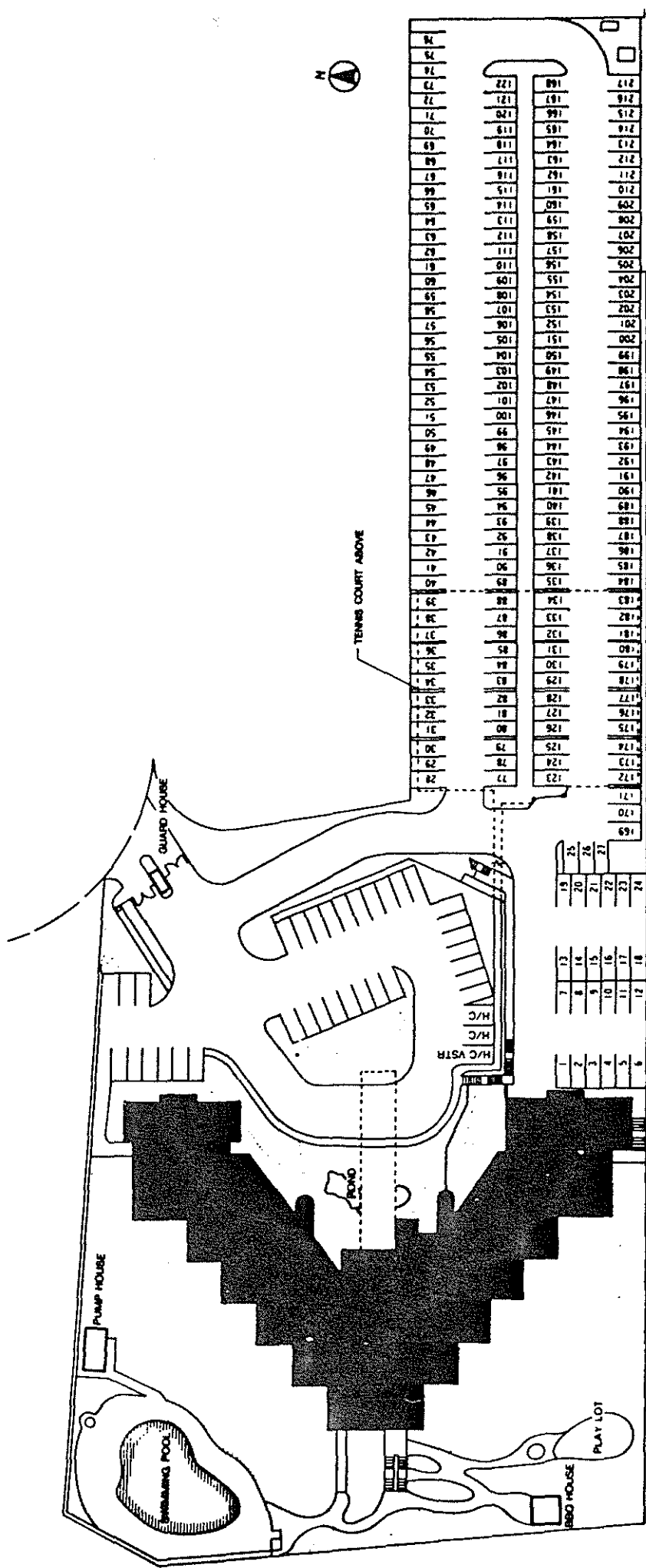
SOUTH ELEVATION



NORTH ELEVATION

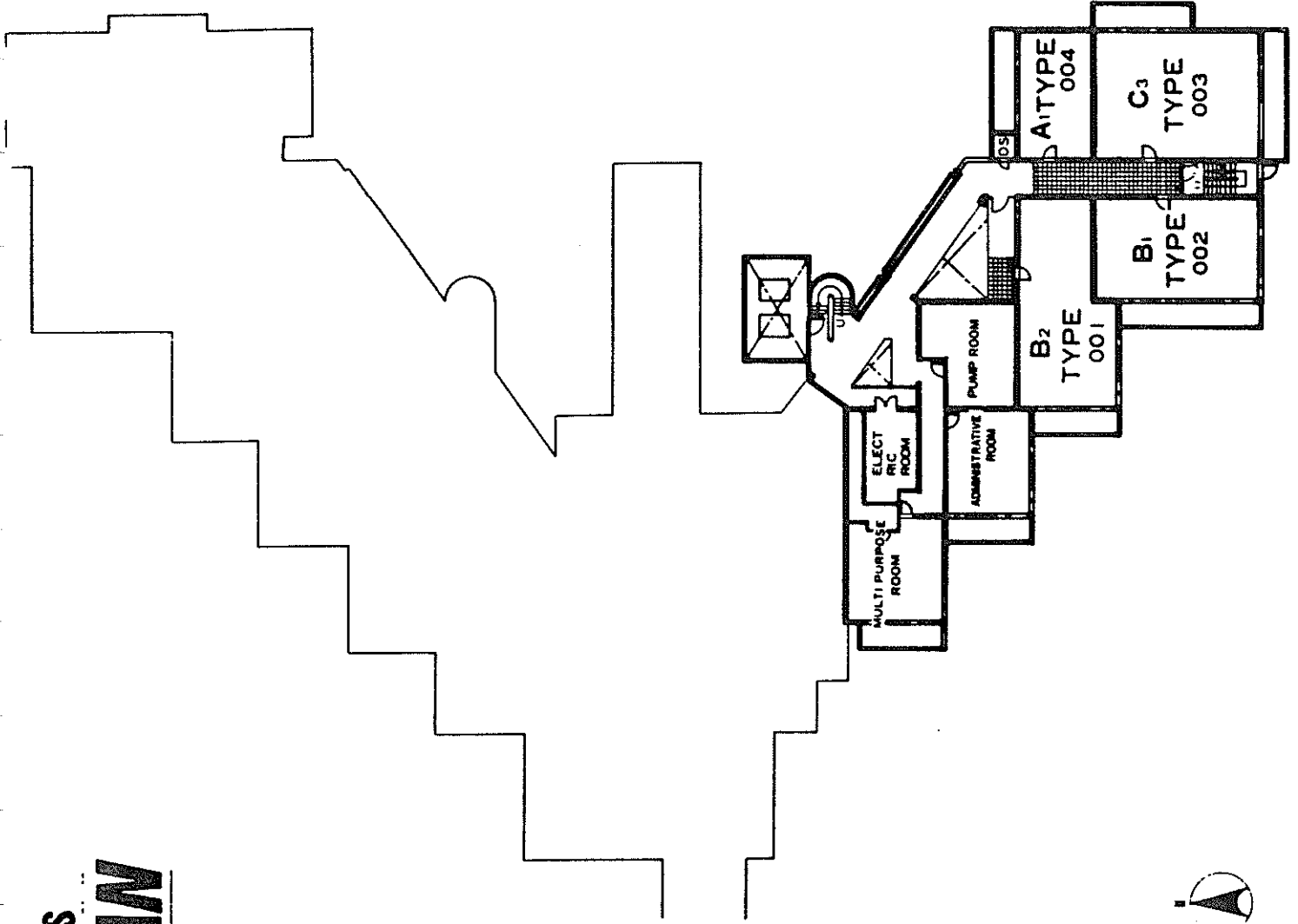


HATSUHO OKA TOWERS SITE PLAN



HATSUHO OKA TOWERS
FLOOR PLAN

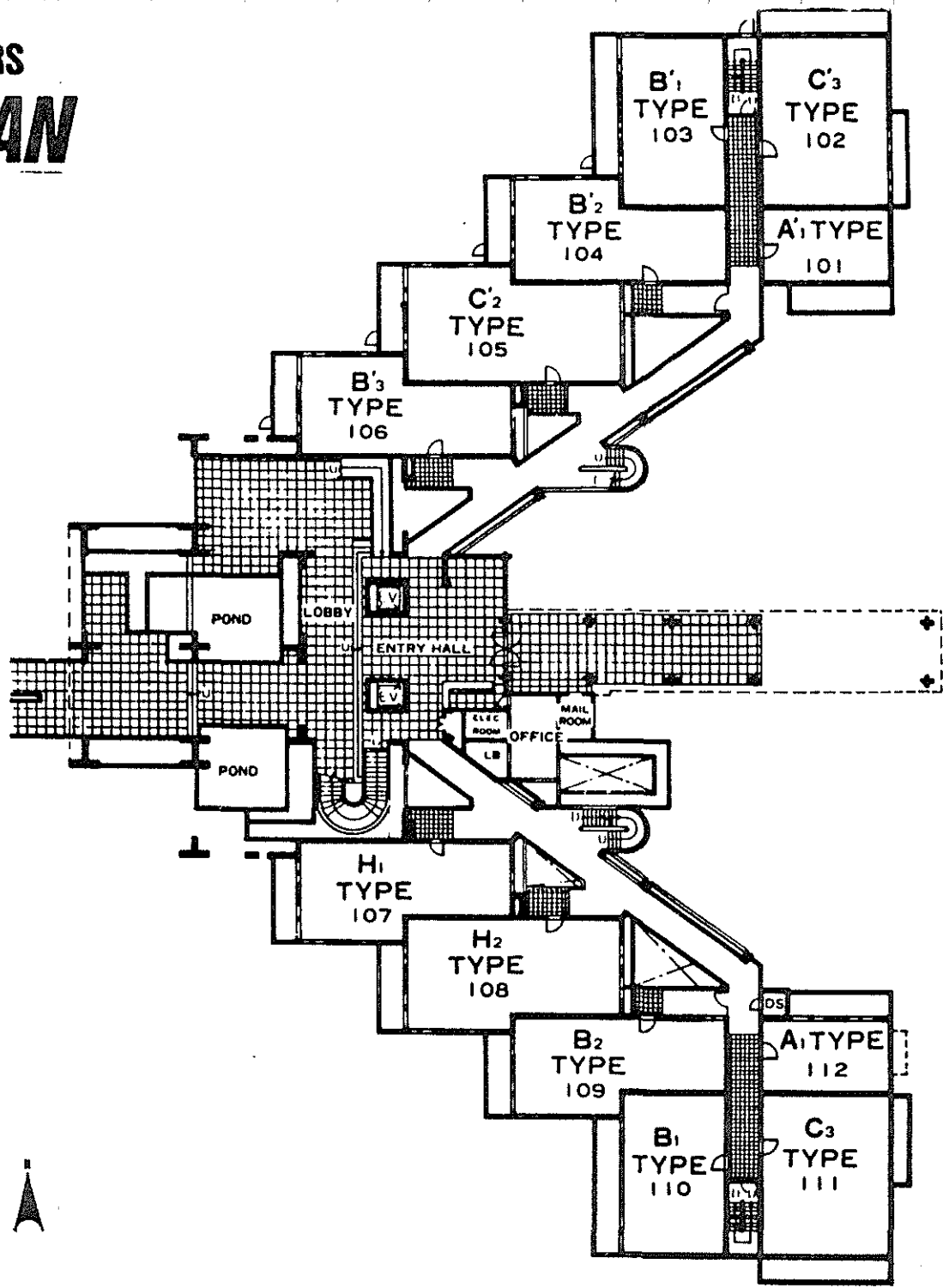
B1st FLOOR
SCALE: 1/5



ITSUHO OKA TOWERS 1st FLOOR PLAN

1st FLOOR

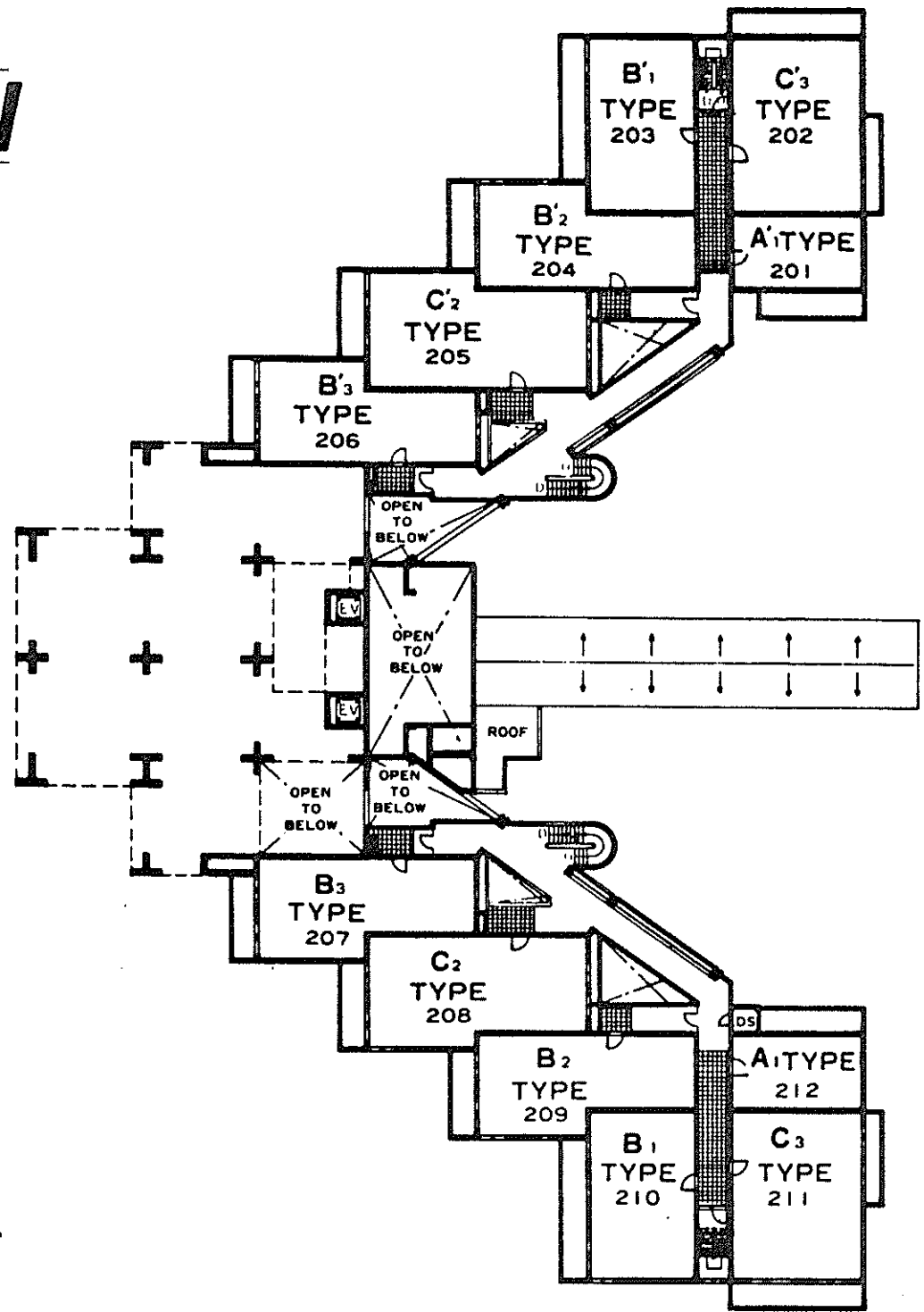
SCALE: 1/573



ITSUNO OKA TOWERS
FLOOR PLAN

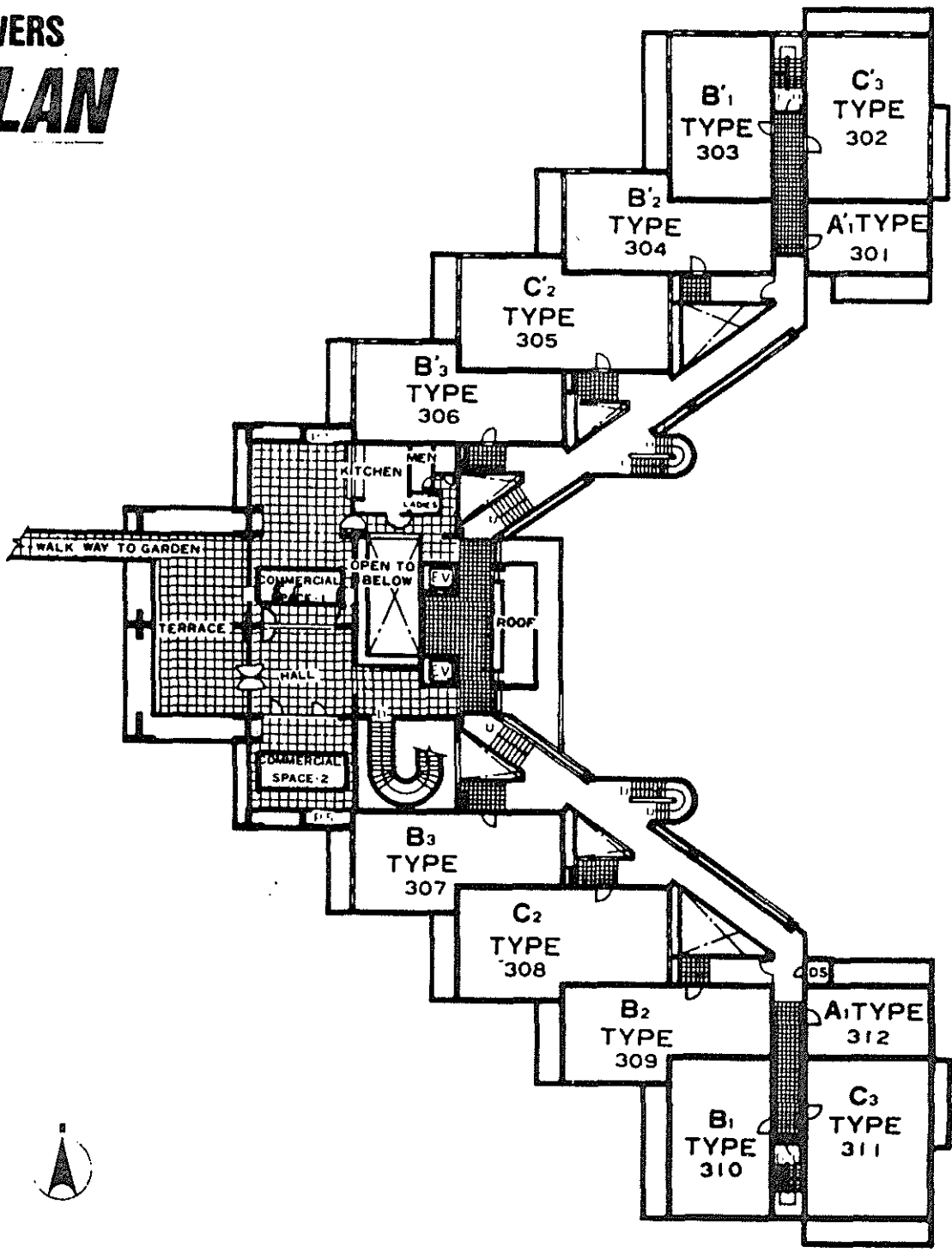
2nd FLOOR

SCALE: 1/573



ATSUHO OKA TOWERS
FLOOR PLAN

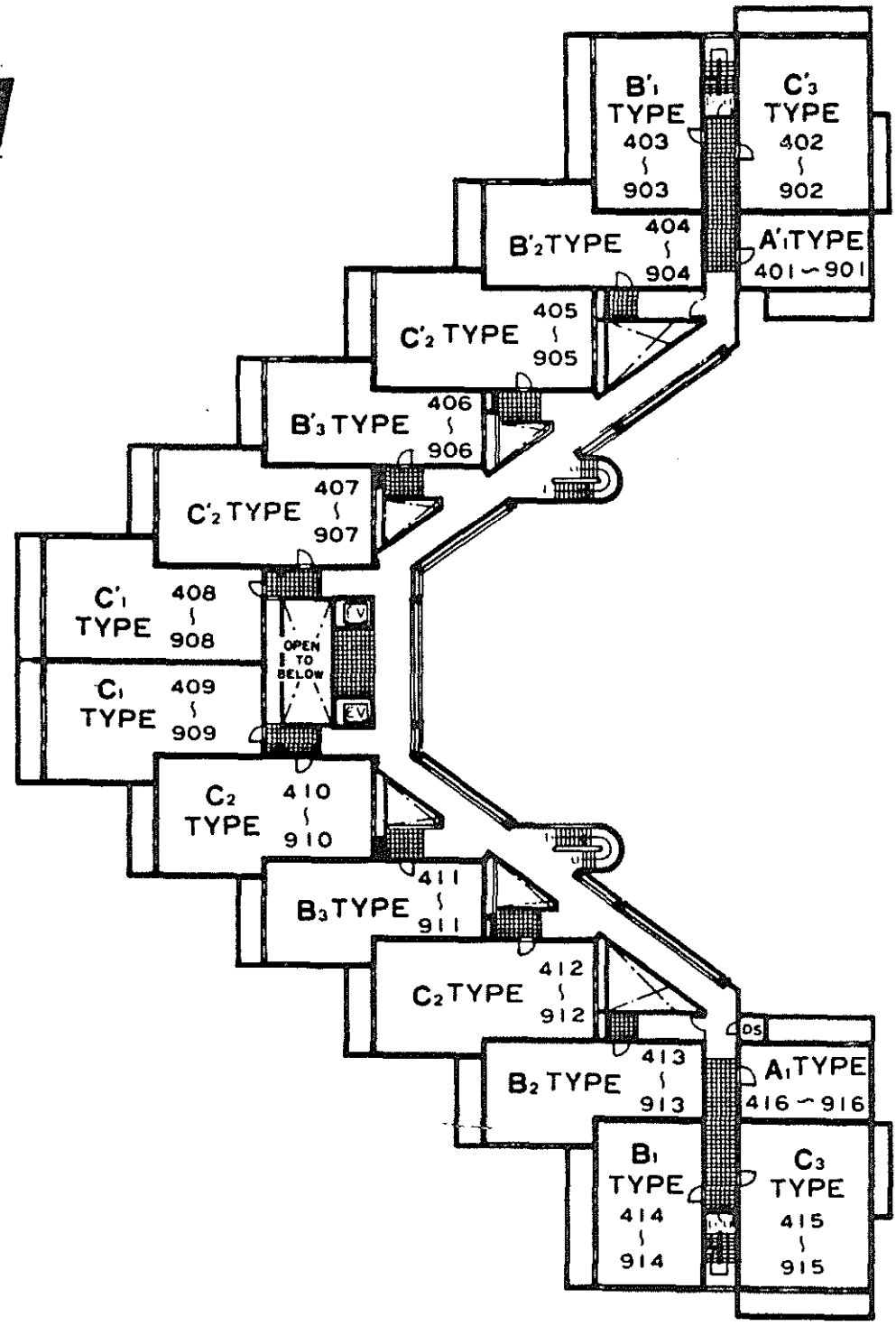
3rd FLOOR
SCALE: 1/573



ITSUHO OKA TOWERS FLOOR PLAN

4th-9th FLOOR

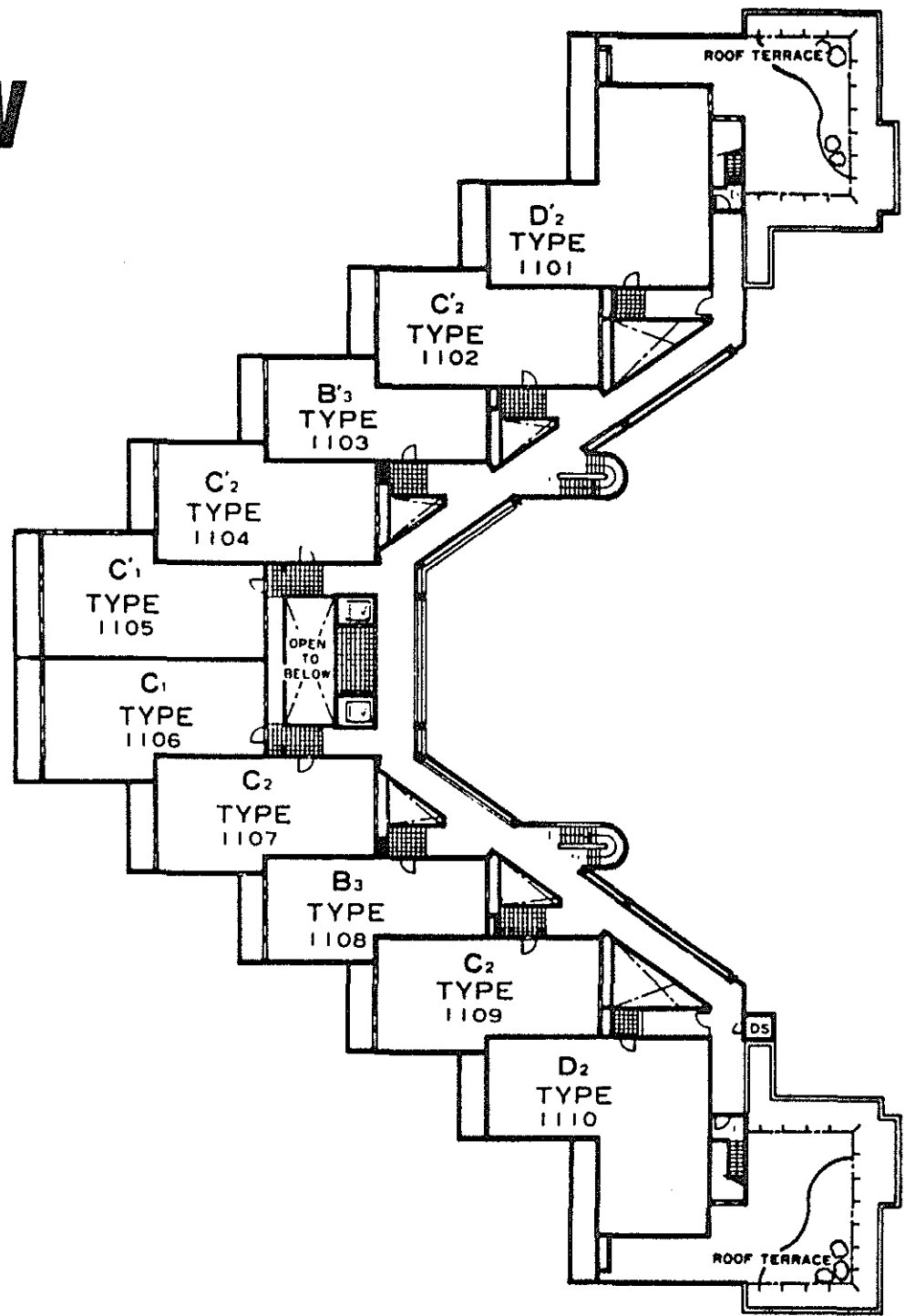
SCALE: 1/573



IATSUHO OKA TOWERS
FLOOR PLAN

11th FLOOR

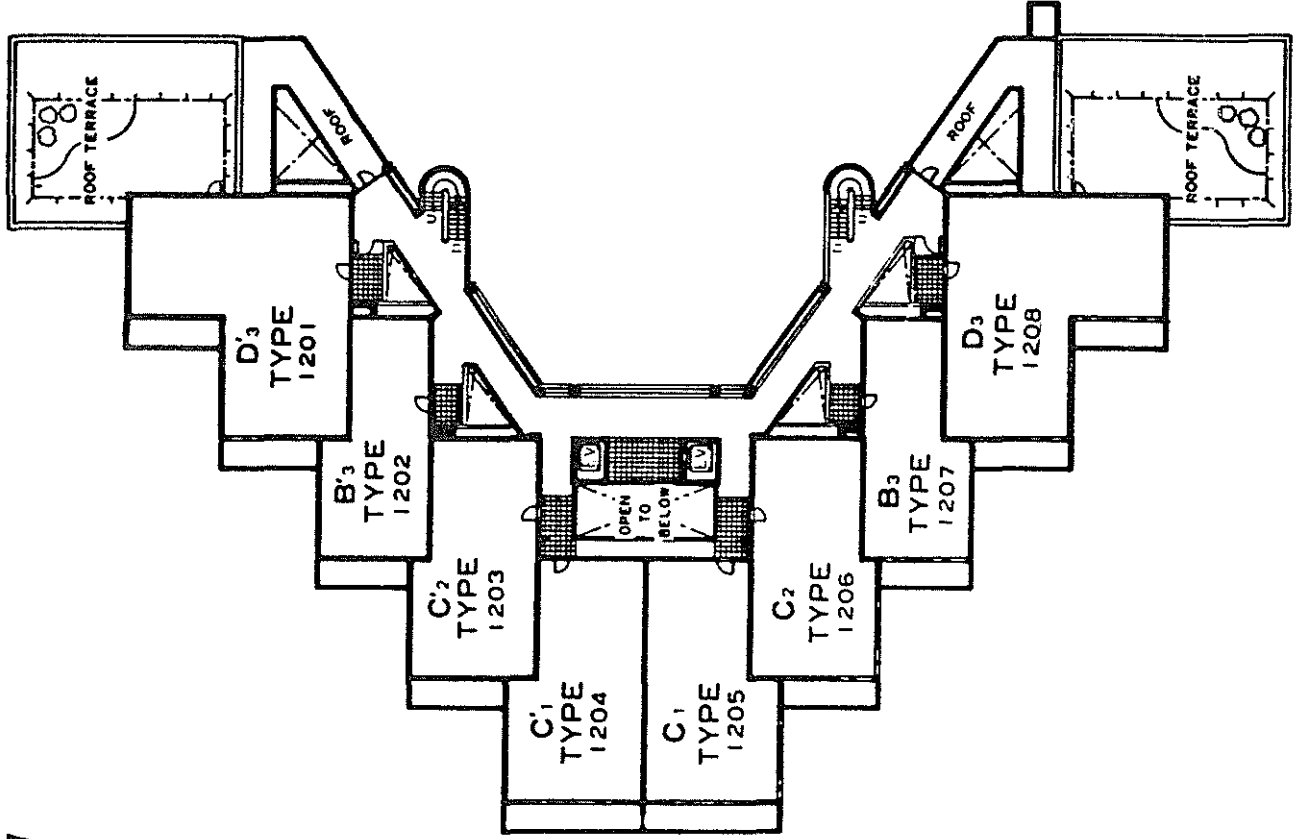
SCALE: 1/573



IATSUHO OKA TOWERS FLOOR PLAN

12th FLOOR

SCALE: 1/50

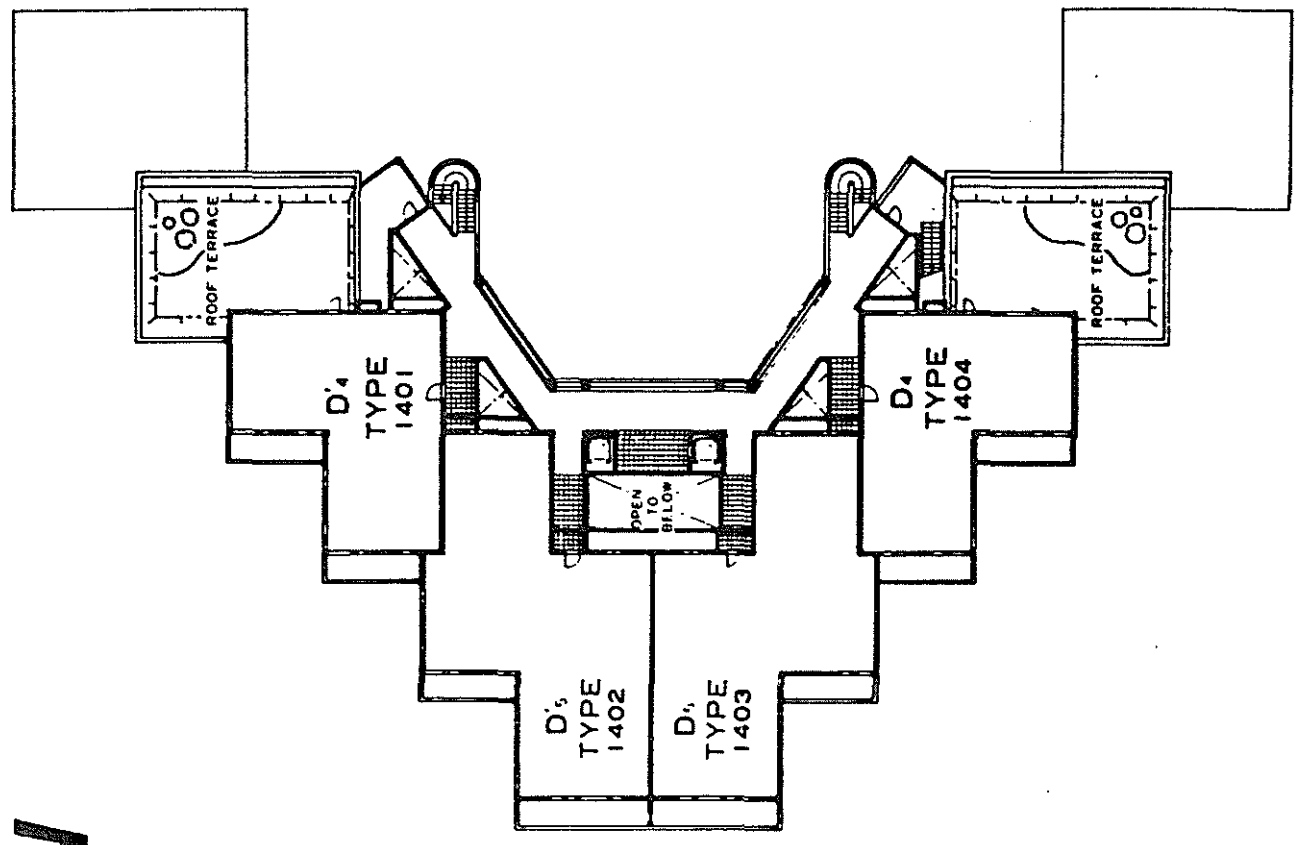


HATSUHO OKA TOWERS

FLOOR PLAN

14th FLOOR

SCALE: 1/57

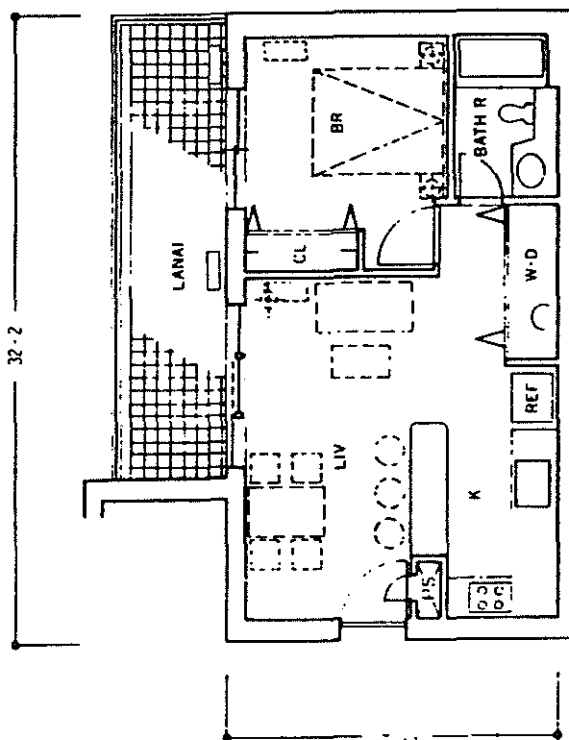


HATSUNO OKA TOWERS UNIT PLAN

A1 Type

	Ea
B1~3F	497.50 SF
4~8 F	504.17 SF
9 F	516.22 SF

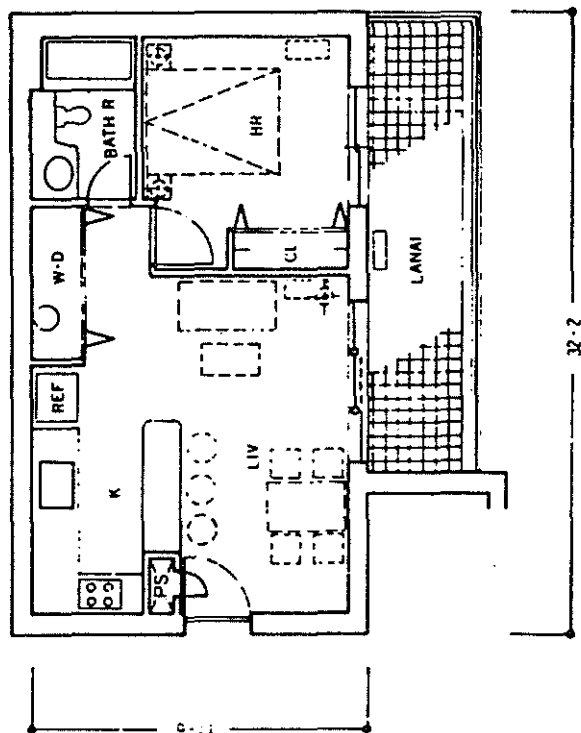
1. The furniture indicated by dash lines are in the furnished rooms.
2. Even if the furniture has a dash under it, riture is not included in the unfurnished.



HATSUNO OKA TOWERS UNIT PLAN

A'1 Type

	Ea
B1~3F	497.50 SF
4~8F	504.17 SF
9F	516.22 SF



1. The furniture indicated by dash lines are inc in the furnished rooms.
2. Even if the furniture has a dash under it, the

